

62-67

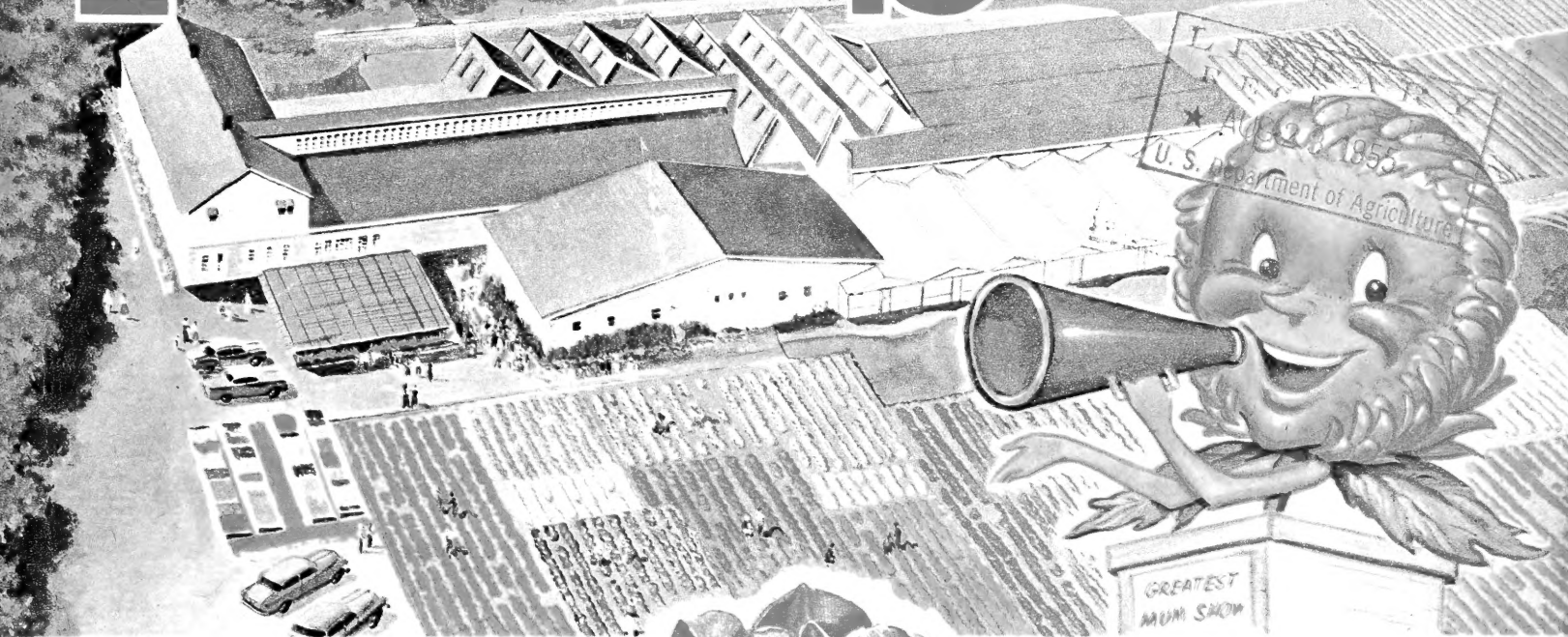
SAVE IN TODAY

Big Savings on quality stock when you visit America's largest nursery super market



SPRING HILL Nurseries
TIPP CITY, OHIO

FALL 1955 SALE

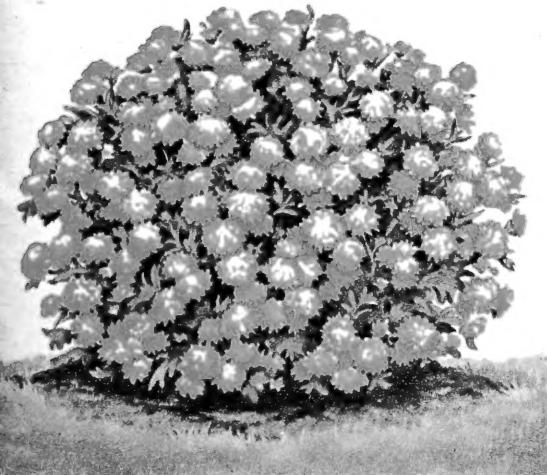


DIG YOUR OWN CHRYSANTHEMUMS

You can dig field grown cushion mums as pictured below at our nursery this fall. Drive to the nursery this fall and dig your own big flowering chrysanthemums from our colorful fields. Your choice of over 200 different varieties, all colors and types. Acres of plants to select from. Take advantage of this opportunity to enjoy big savings by doing your own digging. Note! We furnish spades, bring your own baskets or boxes.

58c each 4 for \$1.69

Please add 50c when we dig plants for you. (4 plants with tops for \$2.19)



VISIT AMERICA'S LARGEST MUM DISPLAY

MILLIONS OF BLOOMS! ACRES OF PLANTS! DOZENS OF COLORS! Come to Tipp City and see this amazing chrysanthemum exhibit. Over 175,000 plants, more than 300 different varieties of the best hardy chrysanthemums. All colors, sizes and shapes of the world's leading varieties. Big savings when you select and dig your own field grown plants from our acres of blooms.

GREAT RED EMPEROR Tulip Sale!!

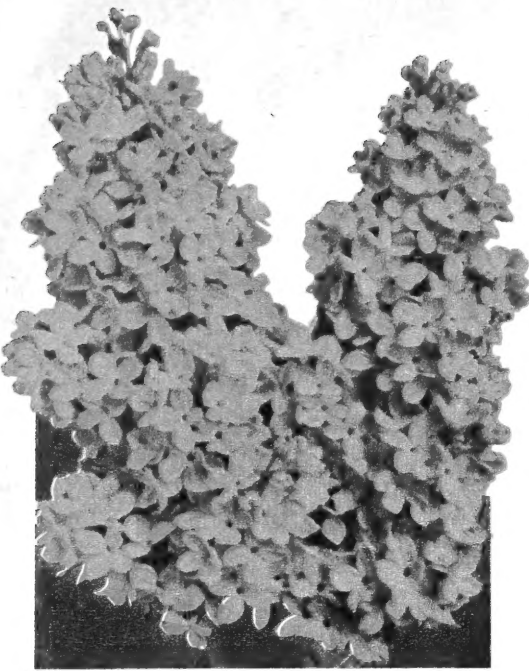
At lowest prices in America

1 B1—(Tulipa fosterina) Unquestionably the most magnificent, largest, brightest red tulip in existence. The huge dinner plate size blooms open like oriental poppies disclosing a handsome black center bordered with yellow. Red Emperor blooms a week before most tulips, is not as tall, height about 18 inches. Guaranteed finest quality true to name, imported Holland grown bulbs. Big Savings.

New low prices. Top size, 11 to 12 c.m. 10 for 90c; 50 for \$3.95; 100 for \$7.75.

20 for \$1.69

Large blooming size, 10 to 11 c.m. 10 for 80c; 20 for \$1.49; 50 for \$3.50; 100 for \$6.75.



Hybrid Lilacs

International favorites renowned for their great abundance of large colorful, fragrant blooms. Big, grafted plants grown and sold by Spring Hill. Most of the plants we sell bloomed in our fields this spring.

BELLE De NANCY—2K1—Huge exquisite satiny rose-pink thrifty bloomer.

CHAS. JOLLY—2K2—One of the, if not the very best, and most beautiful double red.

MICHAEL BUCHNER—2K3—Beautiful pinkish-lilac, double blooms. Free flowering.

MME. LEMOINE—2K4—The most popular and an excellent large, double, snowy-white.

PRESIDENT GREVY—2K5—Extra large, fragrant flower trusses of clear, double blue.

LUDWIG SPAETH—2K6—High rated, extremely fragrant, beautiful deep violet-red.

Choice of above six hybrid lilacs. Heavy, well branched field grown, grafted 4 yr. old plants. 18 to 24 inch, 98c each, 2 for \$1.85; 6 for \$5.25; 2 to 3 ft. size, \$1.35 each, 2 for \$2.55, 6 for \$7.35; 3 to 4 ft. size, \$1.85 each, 2 for \$3.55.

Hybrid Lilac Garden Special

2KG7—One each White, Pink, Purple, Red. Guaranteed extra choice varieties all 3 year, 1½ to 2 ft. tall, grafted plants, most of which bloomed in our nursery this spring. Labeled as to color only.

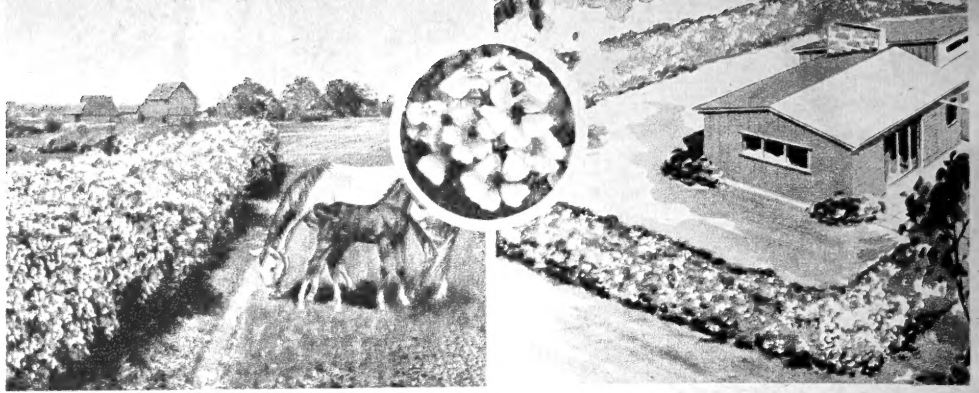
All 4 for \$2.99

OLD FASHIONED PURPLE LILAC

2K8—(*Syringa Vulgaris*) Great masses of beautiful fragrant blooms each spring. Excellent for bouquets. Hardy, tall growing plants last a lifetime. 3 yr. heavy, 1½ to 2 ft. 65c each, 3 for \$1.65. 2 to 3 ft. size, 80c each, 3 for \$2.20.

IMPROVED PERSIAN LILAC

2K9—(*Syringa Rothomagensis*) More dwarf and graceful growing than French or Old Fashion Lilacs. Big vivid rosy-lilac blooms in greatest profusion. Exceptionally nice, semi-tall shrub. 2" pot size, about 1 ft. tall, 48c each, 3 for \$1.25; 2 to 3 ft. size, 90c each, 3 for \$2.45, 10 for \$7.70.



ROSA MULTIFLORA The Miracle Living Fence

2H10—Protect and beautify your property. A cheap practical fence that grows so dense no person or animal can get through.

The plans grow 6 to 8 ft. tall and 5 to 7 ft. wide, are tough and fast growing. Covered with a multitude of white flowers in spring; loaded with attractive red fruit in fall and winter which provide food for wild life.

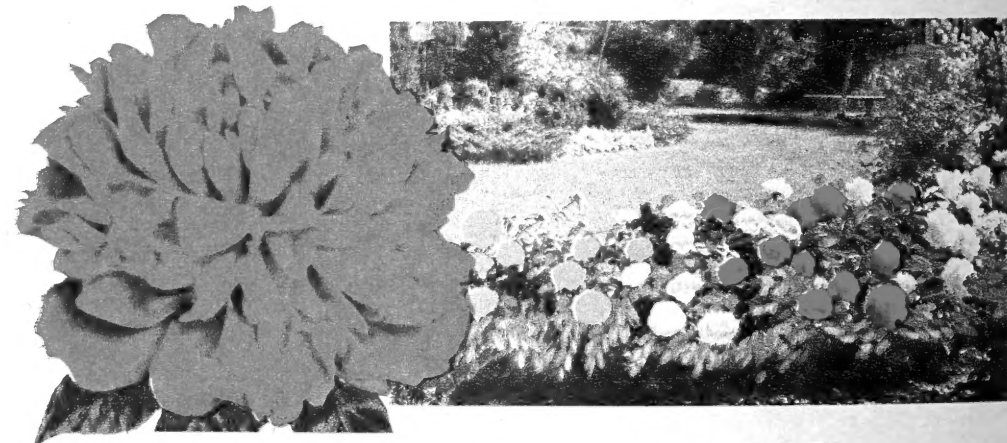
Recommended by U. S. Soil Conservation service for livestock farm fence and for factories, parks, estates, institutions, large lawns, etc. that wish to keep animals and trespassers off their property. Present recommendation by U.S.D.A. are to plant 1 ft. apart in a single row for stock tight fence. Ornamental hedges can be planted 18 inches

apart and kept trimmed to desired height. Trial fences planted throughout east, west and south have proven successful. North of Milwaukee there is danger of winter injury. The general use of rosa multiflora is just beginning but its value is proven for cheap fence, game management, property protection, windbreaks and erosion control to soil and crops, will last for generations.

BIG DEMAND, WE SUGGEST EARLY ORDERS

6 to 12 inch	12 to 18 inch	18 to 24 inch
10 for .85	10 for \$1.15	10 for \$1.65
25 for \$1.50	25 for \$2.50	25 for \$3.50
100 for \$4.95	100 for \$7.50	100 for \$12.50
1000- \$40.00	1000- \$65.00	1000- \$110.00

(500 or more plants of a size at 1000 rate)



BIG BEAUTIFUL PEONIES

Expertly chosen. High scoring 3 to 5 eye plants to delight you for years. All peonies sold on this page are young thrifty clean 1st size top grade, 3 to 5 eye plants of high scoring varieties.

OFFICIALIS RUBRA PLENA—2P11—The earliest large blooming double red peony. Color picture page 9. \$1.19 each, 3 for \$3.30.

PRINCE OF DARKNESS — 2P12 — Gorgeous single variety. Big collar of blazing dark red petals with brilliant golden center dome. New low price, \$1.19 each, 3 for \$3.30.

PRIMEVERE—2P14—Called the yellow peony. Lovely large mother of pearl petals form a collar with a huge baseball size globe of rich yellow center petals. \$1.50 each, 3 for \$4.20.

Memorial Day Peonies

Dependable, early blooming, free flowering.

FELIX CROUSSE—2P16—Large, globe-shaped; red. 89c each, 3 for \$2.35.

EDILUS SUPERBA—2P17—Big rosy-pink, silver reverse. 85c each, 3 for \$2.25.

DUCHESS DE NEMOURS — 2P18 — Lovely big double snow-white. 75c each, 3 for \$1.95.

MONSIEUR MARTIN CAHAZAC—2P20—(The Famous Black Peony). Darkest, nearest black peony grown. Beautiful, deep crimson-maroon, fully double blooms. \$1.65 each, 3 for \$4.65.

WALTER FAXON—2P21—Highest rated vivid salmon rose. Extra fine — recommended. \$1.19 each; 3 for \$3.30.

BENJAMIN FRANKLIN—2P23—Superb dark rich crimson with tall strong stems. Mid-season. \$1.35 each, 3 for \$3.75.

LADY ALEXANDER DUFF—2P24—Huge, fragrant apple blossom pink, extra high scoring and dependable. 98c each, 3 for \$2.65.

Big Beautiful Peony Garden

2PG26—One each of six varieties listed. 1st size, top grade, 3 to 5 eye plants. All labeled. One each, Prince of Darkness, Primevere, Monsieur Martin Cahazac, Walter Faxon, Benjamin Franklin and Lady Alexander Duff. Regular \$7.86 catalog value.

All 6 for \$6.99

Dear Friends:

This part of our 1955 Fall Catalog is designed to tell you about Spring Hill. Peter Bohlender, our grandfather, stayed home in 1849 instead of going West for gold. With the smallest shoestring beginnings he started what is now one of the largest nurseries in America.

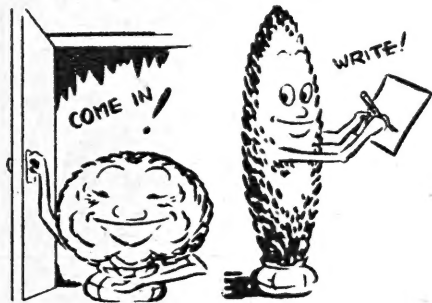
During the depression years in the 1930's we decided to specialize in selling direct the nursery stock we grow. With the help of an excellent and experienced staff of employees, hard work, modern equipment, latest techniques, and fertile farms we are producing a large acreage of high quality plants here at Tipp City and selling them direct at big savings to you.

Shop this catalog, compare prices and quality. We will save you many dollars. If possible, visit the nursery and shop in our super market where you can select your own plants or order by mail the easy and convenient way. May we be privileged to serve you?

Our sincere thanks for your patronage.

Tom and Howard Kyle

**VISIT THE NURSERY
OR ORDER BY MAIL**



*Greatest Selection of Nursery
Stock in the Midwest*

In America's largest nursery super-market sales shed you will be comfortable and are free to look around leisurely. Select your own stock, each variety is pictured and labeled as to name, size and price. If you wish assistance ask for sales clerk. Drive in today, our low prices save you money.

**Buy SPRING HILL'S
Quality Plants**

For a square deal and big savings—sold in standard grades, adopted by American Association of Nurserymen. No wild claims of miracle crops or blooms—simple, honest descriptions. Satisfaction guaranteed.

We do not ship fall orders except by special request until Oct. 15th. It is usually mid-October or later before ripening frosts and fall rains make digging desirable.

Hundreds of visitors each spring;
you are always welcome.

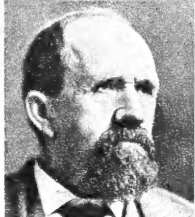
Inside view, America's largest
nursery sales shed.

Acres of the finest hardy
mums in bloom to select from.

Dig these big blooming
plants at tremendous savings.



106 YEARS OF RELIABLE SERVICE ... continuously operated by one family



PETER BOHLENDER
Founder 1849



H. N. KYLE
son-in-law,
Sec'y. 1909-28



W. F. BOHLENDER
son and gen. mgr.
1912 to 1936



TOM KYLE
General Manager
Grandson



HOWARD KYLE
Secretary
Grandson

OUR GUARANTEE TO YOU

We guarantee high quality stock, exactly as represented, government inspected, true to name and to arrive safely in healthy, live growing condition. Any plants that reach you otherwise will be replaced free.

REPLACEMENTS — We guarantee our plants to grow, bloom and produce if given intelligent handling, proper planting and reasonable care. Weather conditions, carelessness and lack of experience by the planter are conditions beyond our control;

regardless of this, Spring Hill will replace any plants that fail to grow at half the original purchase price if notice is made three months after delivery of your order. Please enter complaints immediately and be sure to return your original order blank or sales slip to us or adjustment cannot be made. It is mutually agreed that our liability cannot be greater than purchase price. **GUARANTEED SATISFACTION.**

Buy Direct From Grower

BIG SAVINGS . . . SUPERIOR QUALITY

Important information for Customers when ordering

ORDERS ACKNOWLEDGED

As soon as your order is received we send an acknowledgement (mailed first class) stating amount of your order, when received and most important—YOUR ORDER NUMBER. Keep this acknowledgement we send you with your assigned order number. We will be unable to locate your order without this number. We must know this number if you wish us to refer to your order.

HOW TO ORDER

Use order blanks enclosed. List the variety of plants you want, state catalog number, size and price. Advise DATE you wish your order shipped.

TERMS AND REMITTANCE

All orders should be accompanied with remittance. Please mail Post Office Money Order, Express Money Order or personal check. Spring Hill cannot be responsible for currency, stamps, war stamps or cash unless sent by registered mail. (Wrap coins securely.) **SORRY, C.O.D. ORDERS NOT ACCEPTED.** Please add 25c service charge if your order is less than \$2.00. Our overhead expense is so great that orders under \$2.00 cannot be handled at our low prices.

WAR STAMPS ACCEPTED

Mail war stamps in payment of your order.

NO AGENTS OR SALESMEN

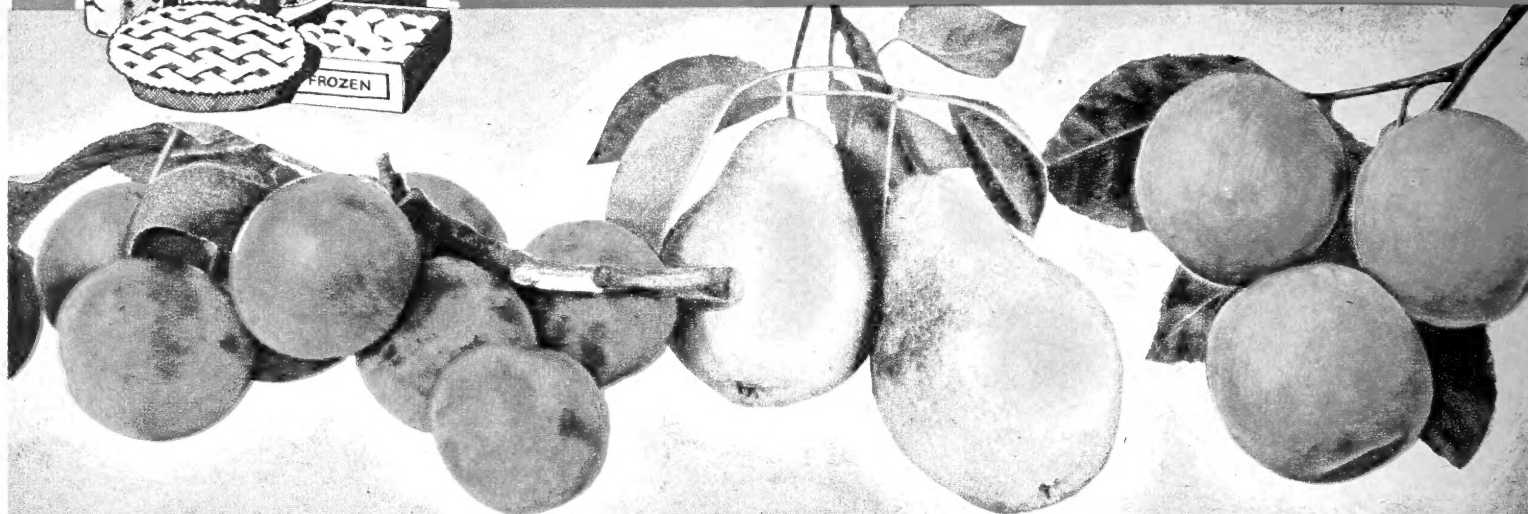
Spring Hill Nurseries has **NO SALESMEN OR AGENTS!** Order direct from this catalog or call at the nursery, otherwise your order is not backed up by our guarantee.

IMPORTANT . . .

PLEASE ADD POSTAGE

Transportation Notice: Please send 35c minimum for postage and packing for orders less than \$3.50; if your order amounts to \$3.50 or more please add 10% for postage and packing. (For a \$6.60 order send 66c postage.) This enables us to give our customers the lowest possible selling price for big, first-class plants. If you do not include postage charges, your order will be shipped express collect, or we will bill you for the parcel post. Trees over 5 feet tall will be shipped express. Ohio customers please add 3% Sales Tax. Customers West of Rocky Mts. please send 60c minimum postage and packing, or if your order amounts to \$3.50 or more, please add 20% for postage and packing.

BLUE RIBBON FRUIT TREE SALE!!



Hardy PLUMS

- ✓ **BURBANK 4F1**—Big, bright red plum fruit of excellent quality, profitable crops.
- ✓ **GREEN GAGE 4F2**—Beautiful rich golden green sweet fruits for eating and cooking.
- ✓ **GIANT PRUNE 4F3**—Big, dark blue freestone; sweet, mellow, yellow flesh.
- ✓ **STANLEY PRUNE 4F4**—Best large purple freestone plum, unsurpassed quality, size. Considered the most hardy and satisfactory plum for home and commercial planting.
- ✓ **IMPROVED SHROPSHIRE DAMSON 4F5**—Heavy fruiting bright blue freestone strain. Unsurpassed for jams, jellies and big yields.

Quality PEARS

- ✓ **KYLE'S SUGAR 4F6**—Healthy trees, big crops with large, delicious, sweet, mellow pears, ready to eat in August.
- ✓ **IMPROVED KIEFFER 4F7**—Our best winter pear; excellent for canning, eating.
- ✓ **BARTLETT 4F8**—The most popular pear in the world. Famous for high quality, juicy, sweet fruit and large yields.
- ✓ **SECKEL 4F9**—The well-known sugar pear, prized for its flavor and eating.
- ✓ **COPE'S SEEDLESS 4F10**—Similar in size, shape and flavor to Bartlett. Without seeds and core. Delightful to eat, easy to can.

Hardy APRICOTS

- Beautiful and productive trees make excellent low growing, broad-headed trees for landscaping and lawn. Handsome foliage, beautiful pink blooms and large, delicious fruit ripening right after cherries. Note! We recommend you plant one each of apricots listed as pollination will increase yields.
- ✓ **MOORPARK 4F11**—Extra large freestone, golden-orange fruit; sweet and juicy.
 - ✓ **HENDERSON 4F12**—New freestone variety of huge size and superb golden color with delicious flavor and big crops. Recommended in every way.
Large size, 3 to 5 ft., \$1.35 each, 3 or more \$1.25 each. Big quick Crop, 5 to 7 ft. size, \$2.50 each, 3 or more \$2.40 each.

PRICES of PLUM and PEAR VARIETIES listed and numbered above. STATE name, quantity, catalog number, height, and price. (Give nearest Express station.)
Graded by height and caliper to U. S. Standards

Height	Price of 1-2 trees	Price of 3-5 trees	Price of 6-10 trees
3 to 5 ft. Large size 2 yr. branched tops	\$1.35 each	\$1.25 each	\$1.20 each
5 to 7 ft. Big Quick Crop	1.95 each	1.85 each	1.80 each

Apricot Tree Special

4FG24.—Two 5 to 7 ft. quick crop Apricot Trees—1 Henderson Apricot; 1 Moorpark, Plus a free gift of 3 quick crop everbearing September raspberries.

ALL 5 PLANTS FOR \$4.79

DWARF FRUIT TREES

LOW PRICED! Attractive little tree for small areas are especially easy to pick and care for. They produce heavily and bear full size fruit quick, usually 1st or 2nd year.

✓ **DWARF BARTLETT PEAR TREES 4F14**—Full size fruit on beautiful miniature trees will bear first or second year, special dwarfing root stock make trees blight resistant. Ideal for city lot planting. Save! New Low price, 2 to 3 ft. size \$1.98 each; 2 for \$3.75; 6 for \$10.95. 3 to 4 ft. size, \$2.95 ea.; 2 for \$5.70.

✓ **DWARF PEACH TREES**—Grafted on Prunus dwarfing understock. Trees often bear 1st year. Choice of the following varieties described on page 5.

- ✓ **GOLDEN JUBILEE 4F19** (Description page 5)
- ✓ **ELBERTA 4F20** (Description page 5)
- ✓ **HALE HAVEN 4F21** (Description page 5)
- ✓ **CHAMPION 4F22** (Description page 5)

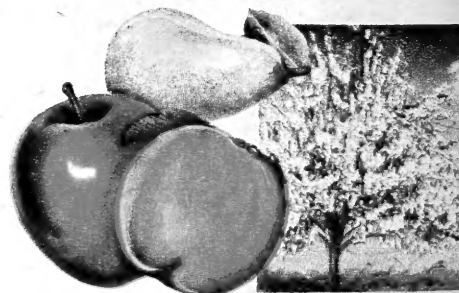
Prices of 4 dwarf peach trees listed above, Big Quick-Crop 4 to 5 ft. size, \$2.89 each, 2 for \$5.50, 4 for \$10.80.

Quantity commercial grower fruit tree prices mailed you by request. Visit our growing farms at Tipp City. No finer trees grown.

✓ **DWARF APPLE TREES**—Grafted on imported number IX Malling Ministry certified stocks. Full size fruit on beautiful low, bushy tree 6 to 10 ft. tall when mature. Trees bear young, pick easier, and have larger, finer flavored apples. Choice of 4 varieties listed below, described on page 5.

- ✓ **YELLOW TRANSPARENT—4F15** (Description page 5)
- ✓ **McINTOSH—4F16** (Description page 5)
- ✓ **GRIMES GOLDEN—4F17** (Description page 5)
- ✓ **DbI. RED DELICIOUS—4F18** (Description pg.5)
New low prices. 3 yr. 2 to 3 ft. branched trees, \$2.49 each, 2 for \$4.75, 4 for \$9.25; Larger Quick Crop, 4 ft. 9/16 to 11/16", \$3.45 each, 2 for \$6.65, 4 for \$12.98.

✓ **NEW DWARF METEOR CHERRY 4F23**—Hybridized by Un. of Minn. Like Montmorency for color, size, flavor and productivity. Extra hardy, small growing trees. Quick crop 4 to 6 ft. 11/16", \$3.45 each, 2 for \$6.65; 3 ft. size, \$2.55 each, 2 for \$4.85.

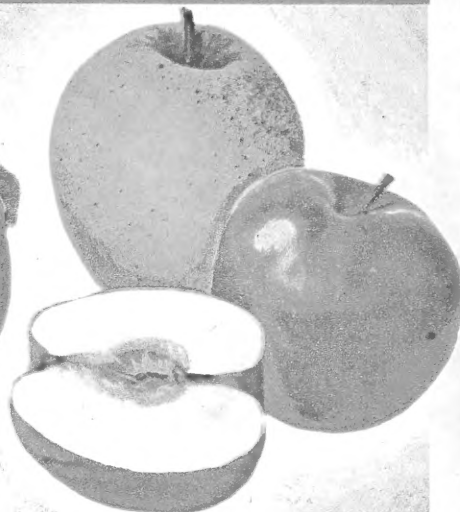
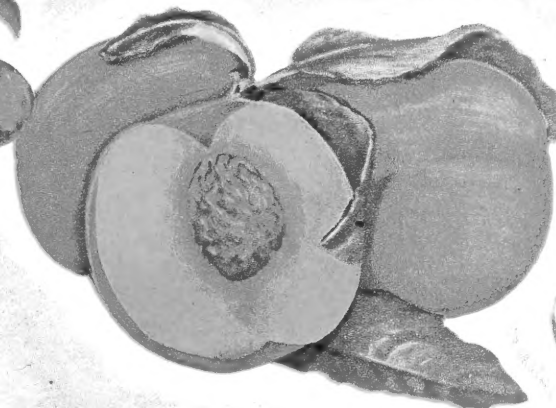
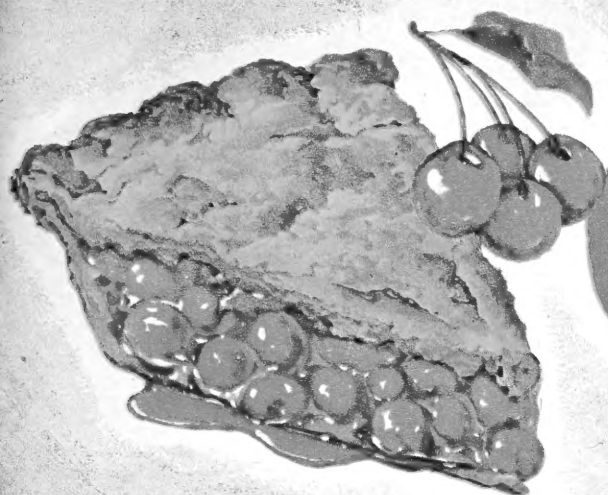


Dwarf Tree Special 4FG25

- 1 Dwarf Yellow Transparent Apple, 4 to 5 ft. \$3.45
- 1 Dwarf Red Delicious Apple, 4 to 5 ft. 3.45
- 1 Dwarf Bartlett Pear, 3 to 4 ft. 2.95
- 1 Dwarf Hale Haven Peach, 4 to 5 ft. 2.89
- 1 Dwarf Meteor Cherry, 4 to 6 ft. 3.45
- Catalog Value \$16.19

All for \$14.95

Spring Hill Nurseries, Tipp City, Ohio



Finest **CHERRIES**

ROYAL ANN (Sweet cherry) 5F1—Popular sweet cherry for canning and eating. Golden-amber with red blush. Large, firm, juicy. Enormous crops.

BLACK TARTARIAN (Sweet cherry) 5F2—Nation-wide popularity. Large, heart-shaped, rich dark maroon, famous ox-heart (almost black) fruits. Sweet flavor.

MONTMORENCY (Sour cherry) 5F3—Universally recognized the best sour cherry. Bears very young; large fruit. Highest yielding canning and pie cherry.

PRICES OF THE 3 CHERRY TREES listed and described above. State name, quantity, catalog number, height, price. Graded by height and caliper to U. S. Standards.

Height	Price of 1-2 trees	Price of 3-5 trees	Price of 6-10 trees
2-3 ft., med. size 1 or 2 year branched tops	\$1.15 ea.	\$1.05 ea.	\$1.00 ea.
4-5 ft., large size 2 or 3 year branched tops	\$1.75 ea.	\$1.65 ea.	\$1.60 ea.
5-7 ft., king size big quick crop trees	\$2.50 ea.	\$2.40 ea.	\$2.30 ea.

NEW RICHMORENCY CHERRY (Sour cherry) 5F4—(U.S. Plant Patent No. 316) A large fruiting, extra early ripening Montmorency. A good money maker because of the immense size, high quality, vigorous growing hardy trees. Ripens 10 days ahead of regular Montmorency. 3 ft. size, \$1.35 each; 3 or more \$1.25 each; 4-5 ft. size, \$2.25 each, 3 or more \$2.15 each; 5-7 ft. Quick Crop, \$2.95 each, 3 or more \$2.85 each.

Largest Grower of Fruit Trees in Ohio

We grow extra quality trees economically because of the tremendous quantities we plant and harvest with our modern specialized farm equipment. Our trees are budded or grafted from improved high-yielding, bright colored, earliest bearing strains. Plant the best—ordering SPRING HILL'S fruit trees is a shrewd purchase.

Delicious **PEACHES**

Your own home grown tree-ripened peaches taste best, cost less. Plant **SPRING HILL'S** superior quality home-grown trees for profit.

RED HAVEN 5F6—New, hardy, extra early ripening, sweet, yellow freestone. Introduced by Michigan Exp. Sta.

GOLDEN JUBILEE 5F7—High yielding, early ripening, yellow freestone. Unsurpassed for canning. Good color, flavor and quality.

BURBANK'S EARLY ELBERTA 5F8—Outstanding, large, beautiful golden freestone. Excellent crops and quality.

HALE HAVEN 5F9—Today's most planted, most popular and most dependable hi-yielding, hi-quality, hardy yellow freestone.

CHAMPION 5F10—The hardiest, most productive, finest flavored white fleshed freestone. Most popular for eating and canning.

FERTILEHALE 5F11—Considered one of the largest and most beautiful peaches. Superb size, color, quality and large crops.

J. H. HALE 5F12—Sells for premium prices. Huge in size with colorful (practically fuzzless) skin, sweet taste. Improved strain.

ELBERTA 5F14—Large fruiting, high-yielding improved strain. Most popular money making variety. Very reliable.

PRICES OF PEACH and APPLE VARIETIES listed and numbered above. State name, quantity, catalog number, height, and price. (Give nearest Express Station.)

Graded by height and caliper to U.S. Standards

Height	Price of 1-2 trees	Price of 3-5 trees	Price of 6-10 trees
3-4 ft., Medium size, 2 yr. branched tops	95c each	85c each	80c each
4-5 ft., Large size, 2 yr. branched tops	\$1.35 each	\$1.25 each	\$1.20 each
5-7 ft., King size Big Quick Crop	1.95 each	1.85 each	1.80 each

SURE CROP NECTARINES 5F25—Unusual, delicious, sweet fruits with thin, smooth skin like a plum. Mellow, rich, juicy, flesh like peaches. Unequaled for eating, fresh or canned. Trees and fruit resemble peaches and can be grown where peach trees grow. Trees bear young—usually 2nd year. 3 to 4 ft. \$1.00 each; 2 for \$1.90; 6 for \$5.40. 5 to 7 ft. \$1.95 each; 2 for \$3.80; 5 for \$9.35; 10 for \$18.50.

Quick Bearing **APPLES**

YELLOW TRANSPARENT 5F15—Very early. Dependable, high yielding, golden variety. Will grow fast and bear young.

EARLY LODI 5F16—Improved, large, high quality golden apple. Splendid to cook and eat. Recommended.

GIANT RAMBO 5F17—Big, red-striped apples in abundance. Unsurpassed for eating; famous for flavor.

McINTOSH 5F18—Large red fruit with snow-white flesh. Tender, juicy, long keeping, thin-skinned apples.

JONATHAN 5F19—High quality bright red apples to cook or eat. Dependable. Fine for cooking and eating.

GRIMES GOLDEN 5F20—Big, yellow, fall ripening apples. Favorite for cooking and eating. Bears young, heavy bearer.

DBL. RED DELICIOUS 5F21—Famous for color, mellowness, flavor and big crop. For eating or cooking this variety is tops.

YELLOW DELICIOUS 5F22—Shape, size and quality of Red Delicious. Bears young and large crops.

DBL. RED STAYMEN WINESAP 5F23—Double red strain. Similar in shape, size, flavor and yields to Staymen Winesap. A great favorite for home and commercial planting. Highly recommended.

RUBY (The Beautiful New Apple) 5F24—A welcome and profitable new variety introduced by Ohio Agri. Exp. Station. Records show large annual yields from young bearing, late blooming, vigorous trees. Large round apples with such brilliant over-all striking red color. Stays firm, holding their shape and sturdy flavor when cooked. Can be harvested late and stored till spring. 3 to 4 ft. whips, \$1.95 ea. 10 or more \$1.70 ea.



Giant Tasty RHUBARB

Plant this fall!!! Enjoy the new improved solid red, tender, highly productive rhubarb next spring. Set 3 ft. apart in well drained location.

CHIPMAN'S CANADA RED

6V1—Large, thick stalks. Solid red from top to bottom. Beautiful solid red fruit when cooked, tender skin and excellent flavor. True, hand propagated plants of North America's favorite variety. 79c each; 3 for \$1.99; 6 for \$3.75.

GIANT McDONALD

6V2—Massive stalks 2 to 3 times larger than common seedling rhubarb, also sweeter. Imported hand propagated, highest yielding strain. 69c each; 3 for \$1.80; 6 for \$3.45.

RUBY RED RHUBARB

6V3—The most tender and mildest with stalks red to the heart from top to bottom. Use all summer. True red strain grown from hand cut No. 1 plants. 69c each; 3 for \$1.80; 6 for \$3.45.

VICTORIA

6V4—The standard commercial variety for many years; grown from re-selected seed. 2 yr. whole roots, 3 for 75c; 6 for \$1.25.

RHUBARB SPECIAL

6VG5—1 Chipman's Red, 1 Giant McDonald, and 1 Ruby Red. Regular \$2.17 value. Unlabelled.

ALL 3 FOR \$1.89

Jumbo Quick-Crop Rhubarb

Plants are much larger with more eyes. They will produce more and larger stalks quick.

CHIPMAN'S CANADA RED

6V6—Jumbo Quick crop size, \$1.10 each; 3 for \$2.95.

GIANT McDONALD

6V7—Jumbo size. 98c each; 3 for \$2.75.

RUBY RED

6V8—Jumbo quick crop size, 98c each, 3 for \$2.75.

VICTORIA

6V9—Jumbo quick crop size (extra large) 69c each, 3 for \$1.65.

QUICK-CROP RHUBARB GARDEN

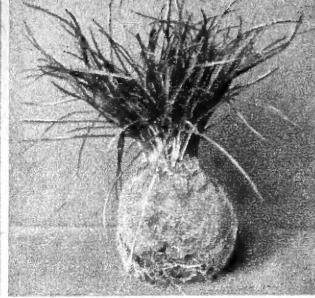
6VG10—1 Chipman's Canada Red, 1 Giant McDonald, 1 Ruby Red. Regular catalog value \$3.06.

ALL 3 FOR \$2.50



Snappy Horseradish

6V11—(Maliner Kren) Famous for crisp, snappy flavor. Noted for large yields of extra large white roots, easily grown. Big crown plants, 30c each; 3 for 70c; 6 for \$1.15. Root cuttings, 3 for 50c; 6 for 85c; 25 for \$2.95.



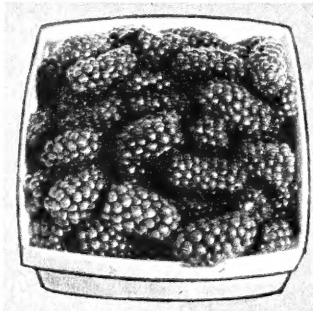
Hardy Chives

6V12—A hardy onion-like plant that grows each year without replanting. Fine for seasoning salads, etc. Pot and force indoors during winter. 2 yr. plants, 2 for 49c; 6 for \$1.25. Big clumps, 40c each; 3 for \$1.00.



Mammoth Sage

6V14—Famous Holt strain. Dried leaves used for seasoning sausage, dressing, etc. Blue flowering hardy plants grow for years without replanting. 1 yr. 33c each; 3 for 75c; 6 for \$1.25. 2 yr. 45c each; 3 for \$1.15.



Blackberries

ELDORADO (Leading Blackberry) 6F15—Large, firm fruit is juicy, sweet with fine flavor. Unexcelled for jams, jellies, freezing, etc. No. 1 plants, 5 for 98c; 10 for \$1.70; 25 for \$2.95; 50 for \$5.50; 100 for \$9.95.

QUICK CROP ELDORADO—6F16

—Larger size, better rooted plants. 5 for \$1.29; 10 for \$2.15; 25 for \$4.35.



Dwarf Beech Plum

6T17—(Prunus Maritima) Attractive and useful bushy shrub-like trees grow 5 to 8 foot tall. The beautiful masses of white blooms are followed by huge crops of amber-red plums larger than cherries. Excellent for eating and cooking. 2 ft. size, 2 for \$1.98. Fruiting age, 4 yr., 3 to 4 ft. tall, 2 for \$2.65; 6 for \$7.20.



Dewberries

LUCRETIA—6F18—Most desirable and profitable early berry. Larger than blackberries, first to ripen. Big glossy, black fruit brings high market prices. First grade plants, 6 for \$1.15; 12 for \$1.79; 25 for \$3.15; 50 for \$5.75; 100 for \$10.95; 250 for \$17.50.

QUICK CROP LUCRETIA—6F19

—Larger size, better rooted No. 1 transplants. 5 for \$1.35; 10 for \$2.25; 25 for \$4.60.

JAM and JELLY SPECIAL 6FG22

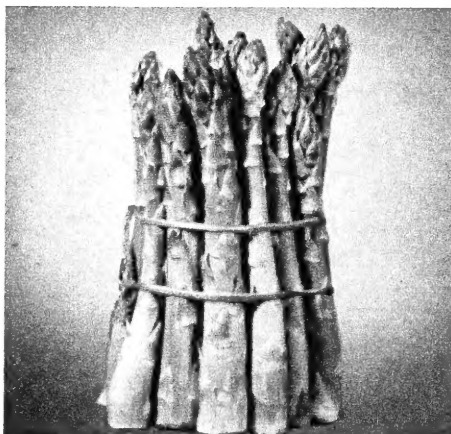
10 Eldorado Blackberries \$1.70
6 Dewberries 1.15
2 Dwarf Beech Plum, 4 yr. 2.65
Catalog Value \$5.50

All 18 plants for \$4.49

Genuine Spearmint

6V20—A mint bed in your garden is attractive, lasts for years and is a useful kitchen enjoyment for garnishing meats, for iced tea, lemonade, juleps, etc. Pot plants, 2 for 60c; 6 for \$1.50.

"Easy to Subscribe" MAGAZINE SERVICE—Enclosed in this catalog are subscription order blanks making it easy for you to order your favorite magazines at lowest prices. Save time and expense and be assured of prompt service. Merely send your order for the magazine you want to FARM JOURNAL, Subscription Dept., Farm Journal Bldg., Philadelphia 5, Penna., to BETTER FARMING, Curtis Circulation Co., Philadelphia 5, Penna., or to the POPULAR GARDENING, 90 State St., Albany, N. Y.—coupons enclosed. Mail coupon with check, money order or cash, covering the subscription prices of the magazines you select for your entire family.

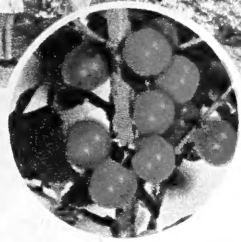
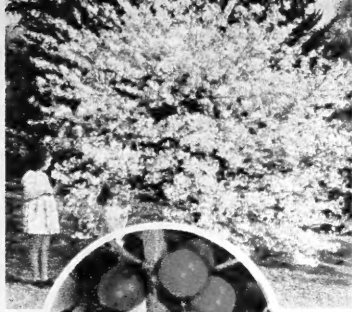


ASPARAGUS

WASHINGTON ASPARAGUS— 6F21

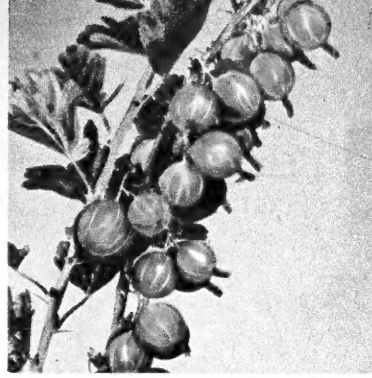
Delicious, Nutritious. Grows well in most all soils and locations. When cared for beds improve with age and last for many years. Fresh cut from your garden is best. Big annual yields. Giant Washington was developed under auspices of U. S. Dept. of Agriculture and is considered the leading variety. Practically immune to rust and has longest cutting period. Giant size, straight, tender, dark green stalks, tinged purple.

Size	6	12	25	100
1st class, 1 yr.	\$.55	\$1.00	\$1.50	\$3.95
1st class, 2 yr.	.75	1.15	1.98	5.95
Jumbo, 3 & 4 yr.	.98	1.65	2.95	9.95



NANKING CHERRY

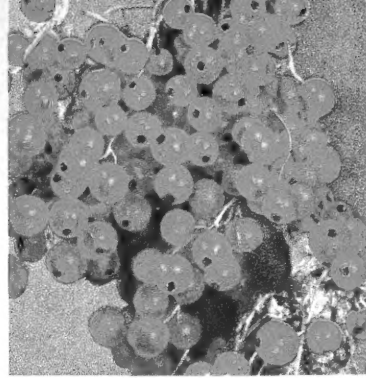
7F1 — (*Prunus Tomentosum*) Fine spreading, dwarf growing (8 to 10 ft.) Japanese cherry with lovely shell pink buds, delicate white blooms and bright red cherries—delicious to eat and fine for cooking. Perfectly hardy. Beautiful and ornamental for home gardens. Bearing age, 3 ft., \$1.95 each; 2 for \$3.70. 1 to 1½ ft., 75c each; 3 for \$1.95.



GOOSEBERRIES

CHAMPION 7F2 — Dependable; large fruiting; vigorous growing bright green fruit that turns gold when ripe. 2 yr., 75c each; 3 for \$1.95; 6 for \$3.60. 3 yr. fruiting age, 90c each; 3 for \$2.45; 6 for \$4.65.

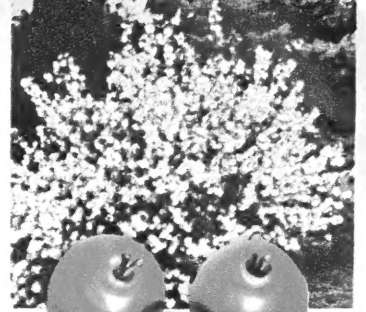
PIXWELL—7F3 — Tremendous crops, easy to pick. Big, delicious sweet, pink berries when ripe. Low price. 2 yr., 79c each; 3 for \$2.15; 6 for \$3.95. 3 yr. fruiting age, 98c each; 3 for \$2.75; 6 for \$5.20.



CURRENTS

RED LAKE 7F4 — Recommended for big crops, extra large red fruit easy to pick. Makes beautiful, fine flavored jelly. 2 yr., 65c each; 3 for \$1.75; 6 for \$3.20. 3 yr. fruiting age, 85c each; 3 for \$2.40; 6 for \$4.50.

WILDER 7F5 — The favorite currant for years. Big, bright red berries. Vigorous grower and heavy producer. 2 yr., 55c each; 3 for \$1.35; 6 for \$2.40. 3 yr. fruiting age, 75c each; 3 for \$1.95; 6 for \$3.60.



Professor Hansen's BUSH CHERRIES

7F6 — Dwarf quick bearing, attractive shrub-like plants with meaty plum-like fruits the size of cherries. Heavy yielding hybrids. Grow into beautiful compact flowering bushes about 4 ft. tall. A fine, ornamental shrub with abundance of fruit for eating and cooking. 3 to 4 ft. bearing age, \$1.00 each; 3 for \$2.70. 2 ft. size, 60c each; 3 for \$1.50; 10 for \$4.50.



RASPBERRIES

CERTIFIED PLANTS . . . Spring Hill's Raspberry plants have been inspected two or more times by Ohio State Dept. of Agri. and meet the rigid disease free requirements.

New Everbearing Red Raspberry Everbearing September

7F7 — An outstanding N. Y. Experiment Station variety that fruits ahead of Latham in the spring and begins bearing several weeks ahead of Indian Summer in the fall. Enormous crops of big glowing red berries with sweet flavor unsurpassed for canning, eating and freezing. Plants increase each year. 3 for \$1.19; 6 for \$2.10; 12 for \$3.95; 25 for \$7.25.

Quick Crop Everbearing September

7F8 — 1 yr. older, larger size, stronger rooted, will bear this summer. 3 for \$1.40; 6 for \$2.45; 12 for \$4.50; 25 for \$8.50.

DELICIOUS HEALTHFUL FRUIT . . . PLANT NOW AT LOW COST

Early Logan (Black Raspberry)

7F9 — A wonderful early fruiting variety with big crops of large, firm, plump, sweet and juicy, jet-black berries. Usually out-yields Cumberland and of equal quality. Also has ability to withstand adverse weather and poor soils. 1st grade Ohio grown tip plants. 5 for 89c; 10 for \$1.55; 25 for \$2.75; 50 for \$4.50; 100 for \$7.95; 500 for \$37.00; 1,000 for \$65.00.

Burgundy (A great new Raspberry)

7F10 — Outstanding and in great demand by commercial growers. Especially disease resistant; high yielding, new hybrid that grows like and resembles a blackcap except the large, sweet, firm berries are Burgundy or violet-red in color. Highly recommended. 3 for \$1.40; 6 for \$2.45; 12 for \$4.50; 25 for \$8.50.

Golden Queen Raspberry

7F11 — Unusual, sugary sweet, bright golden raspberry of superb quality. Hardy, vigorous growing, high yielding plants recommended for commercial and home gardens. It sells for premium prices because of its beauty and quality. Our large bearing age plants will fruit this summer for you. Special low price, 5 for \$1.20; 10 for \$1.98; 25 for \$4.50; 100 for \$13.95.

Quick Crop Golden Queen

7F12 — Larger size, stronger rooted, 3 for 95c; 6 for \$1.65; 10 for \$2.45; 25 for \$5.65.

Cumberland (Black Raspberry)

7F14 — For many years the most popular, mid-season variety. The large, glossy black fruits are sweet, juicy, with superb flavor. 1st grade tip plants, 5 for 95c; 10 for \$1.60; 25 for \$2.95; 100 for \$8.95.

Bristol (Black Raspberry)

7F15 — Winning National acclaim and popularity as the most dependable and disease resistant black raspberry. Plants are vigorous, healthy and most productive. Large, glossy-black berries with productive blackcap flavor. Unexcelled for eating, freezing and cooking. Recommended. 1st grade Ohio grown tip plants. 5 for 89c; 10 for \$1.55; 25 for \$2.75; 50 for \$4.50; 100 for \$7.95; 500 for \$37.00; 1,000 for \$65.00.

Giant Latham (Red Raspberry)

7F16 — Accepted nationally as finest of all red raspberries. Big, sweet, juicy, red fruit unsurpassed for freezing, canning and eating. Recommended for home or commercial as the best of all mid-season varieties. Strong, thrifty, tall plants thrive in all sections where raspberries can be grown. 1st grade Ohio grown tip plants, 5 for \$1.10; 10 for \$1.85; 25 for \$3.55; 50 for \$6.50; 100 for \$11.95; 500 for \$51.50.

Quick Crop Latham

7F17 — Larger size, stronger rooted, bearing age. 5 for \$1.29; 10 for \$2.15; 25 for \$4.35; 50 for \$7.95; 100 for \$14.80.

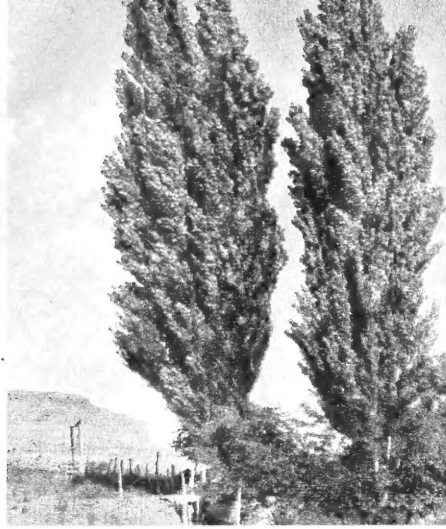


FAMILY RASPBERRY PATCH

7FG18

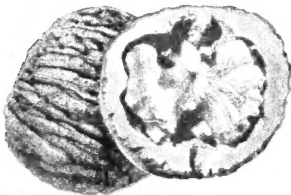
10 Early Logan	\$1.55
10 Bristol	1.55
10 Quick-Crop Latham	2.15
6 Quick-Crop Everb. September	2.45
6 Golden Queen Quick-Crop	1.65
Regular catalog value \$9.35	

ALL 42 FOR \$6.95



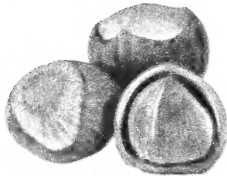
Lombardy Poplar

8T31—Stately, tall, narrow growing trees of rapid growth. Handsome, glossy leaves shimmer beautifully in the breezes. Excellent for tall hedges, screening along boundary lines, driveways or planted as sentinel trees. 18 to 24 inch, 6 for 89c; 12 for \$1.50; 25 for \$2.65. 3 to 4 ft., 4 for \$1.01; 8 for \$1.79; 25 for \$4.95. 5 to 6 ft., 3 yr., 69c each; 3 for \$1.75; 6 for \$3.30. 6 to 8 ft. 3 yr., 89c each; 3 for \$2.35; 6 for \$4.50. 8 to 10 ft. 4 yr., \$1.45 each; 3 for \$3.95; 6 for \$7.75.



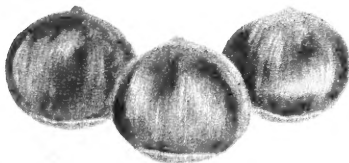
Black Walnut

8NT28—Make excellent, sturdy, tall, ornamental trees that yield heavily each year. Valuable for timber, shade and nuts with black walnut taste. 2 ft. tall: 2 for 45c; 6 for \$1.25. 3 to 4 ft., 2 for \$1.10; 6 for \$2.70. 5 to 6 ft., \$3.15 each; 2 for \$5.95.



American Hazel Nut

8NT29—Quick bearing, dwarf growing. Easy to crack, large, sweet kernels, shell out whole. Fine for shrub borders or hedges. 1 ft. size, 45c each; 3 for \$1.19; 6 for \$2.25; 25 for \$8.75. Fruiting age, 3 ft., \$1.00 each; 3 for \$2.75; 6 for \$4.98.



Chinese Chestnut

8NT30—Blight resistant, grows successfully where native trees have died. Ornamental, medium size, spreading trees. Big, sweet nuts compare to native kinds. *Sturdy* 2 ft size, 2 for \$1.89; 4 for \$3.55; 12 for \$9.50. *Quick crop*, 5 to 6 ft., \$2.90 each; 2 for \$5.50; 6 for \$15.90. (Plant two or more for pollination.)

HARDY GRAPES

BEAR FRUIT SECOND YEAR
HEALTHFUL . . . ECONOMICAL

NIAGARA — 8F1—Favorite, hardy, white grape. Lusciously sweet. 2 yr., 42c each; 3 for \$1.10. 3 yr., 55c each; 3 for \$1.45.

CACO — 8F2—Delicious, honey-sweet, large red fruit. 2 yr., 50c each; 3 for \$1.35. 3 yr., 65c each; 3 for \$1.75.

FREDONIA — 8F3—Early ripening, extra large bunches, high yielding. 2 yr., 45c each; 3 for \$1.15. 3 yr., 55c each; 3 for \$1.45.

SENECA — 8F4—Large, long, tapering bunches of California-like oval-shaped, sweet, yellow grapes; eat whole. Vigorous production. 2 yr., 65c each; 3 for \$1.75.

SIEBEL 1000 (New French Variety) — 8F5—Hardy, jet black sugary sweet French grape with edible skin. Popular in commercial areas. 2 yr., 70c each; 3 for \$1.95. 3 yr., 90c each; 2 for \$1.70.

Home Vineyard Special

8FG6—One red, white and blue. Excellent selection for home and garden.

1 Red Caco, 2 yr. 50
1 White Niagara, 2 yr. 42
1 Blue Concord, 2 yr. 35
Catalog value. \$1.27

SAVE 20%

All 3 for
98c



Large Bearing Age Grapevines

Why wait? You can enjoy grapes from your own vines next fall. Plant now! The vines we will send you have already produced one crop of fruit. Trimmed for planting. Choice of the following. **Concord — 8F10; Niagara — 8F11; Fredonia — 8F12; Caco — 8F14.** Order by name, catalog number.

90c each • 2 for \$1.60
4 for \$2.98 • 10 for \$7.25

CONCORD—America's Finest Grape

8F7—The most popular grape in the United States commercially and for home use. This dependable, heavy yielding variety has an abundance of large bunches of big, dark blue, sweet, juicy fruits.
2 yr., 35c each; 3 for 79c; 6 for \$1.40; 25 for \$4.95. 3 yr., 45c each; 3 for \$1.15; 10 for \$2.85.

SUPERB HARDY CUT FLOWER

Enjoy their colorful bouquets and garden display through late summer and early fall. All are easily grown, perfectly winter hardy in North, grow for years without replanting and can be divided. Choice new and most dependable varieties pictured opposite.

(A) BLUE GEM

8P15—The deepest and richest violet-blue. Neat, compact growth. Awe-inspiring beauty. 3 ft. tall.

(B) CARDINAL

8P16—Well branched plants with brilliant cardinal red flowers of large size. Fine for cutting.

(C) MT. EVEREST

8P17—Rated the finest of all white hardy asters. Winner of many prizes.

HARDY ASTERS

(D) BLUE GOWN

8P18—Abundance of China-blue blooms on erect branches. 3½ ft. tall.

(E) SUNSET

8P19—The best new pink in our fields. Neat, compact growing vivid sunset-pink.

Choice of above 5 hardy Asters, big field-grown clumps 45c each; 3 for \$1.25; 10 for \$3.85.

Cut Flower Hardy Aster Garden

8PG20—Spring Hill's selection of 1 violet; 1 blue; 1 red; 1 white; 1 pink. Guaranteed.

5 for \$1.69

PARROT TULIPS

Spring Hill's new varieties of Parrot tulips have strong stems, huge robust flowers with a rich brilliance and artistic gracefulness. They are splendid for cut-flowers and wonderfully effective for decorations. Our sales on this fashionable tulip is increasing remarkably each year. All large 11-12 c.m. imported bulbs that will bloom for many years.

ORANGE FAVORITE — 8B21—Sweet scented, orange-scarlet. 5 for 60c; 10 for 95c; 20 for \$1.69; 40 for \$3.20.

BLUE PARROT — 8B22—Enormous in size, exquisite form. 5 for 75c; 10 for \$1.35; 20 for \$2.45; 40 for \$4.65.

SUNSHINE — 8B23—Outstanding gold-en-yellow variety. 5 for 75c; 10 for \$1.35; 20 for \$2.45; 40 for \$4.65.

CHARMING ORCHID-LIKE QUALITY BEAUTIFUL FLOWERS

FANTASY — 8B24—Huge blooms of colorful pink shades. 5 for 60c; 10 for 95c; 20 for \$1.69; 40 for \$3.20.

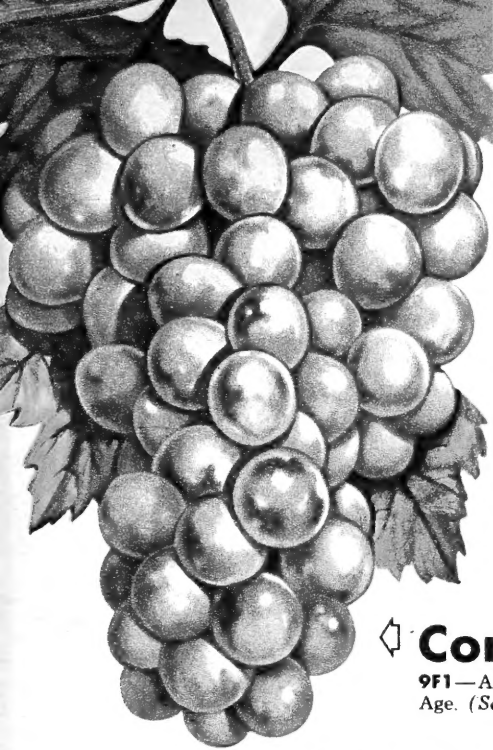
PIERSON — 8B25—A large crimson-maroon. 5 for 65c; 10 for \$1.10; 20 for \$1.89; 40 for \$3.55.

FIREBIRD — 8B26—An intense bright carmine-red. 5 for 65c; 10 for \$1.10; 20 for \$1.89; 40 for \$3.55.

Parrot Tulip Garden

8B27—Fully guaranteed rainbow mixture of red, pink, yellow, blue, maroon and orange. Large 11-12 c.m. Holland grown.

12 for 98c • 50 for \$3.25
100 for \$5.95 • 20 for \$1.39



Concord Grape

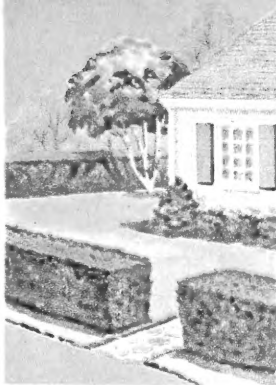
9F1—All-American Favorite, Large Bearing
Age. (See opposite page for description.)

90c each



FLOWERING ALMOND

9K2—(*Prunus Glandulosa*) Beautiful compact, bushy plants grow 3 ft. tall. Multitudes of lovely double rose-pink blooms fill plants for several weeks each spring. 12 to 18 inch, **70c each; 3 for \$1.75.** 2 to 3 ft., **95c ea.; 3 for \$2.65.**



HARDY PRIVET

9H3—(*Amur River Privet*) Upright, compact, fast growing. Ideal for clipped hedge, plant 1 ft. apart. Finest hedge for the North. 9 to 12 inch branched. **10 for \$1.79; 100 for \$9.95; 25 for \$2.95.**



HYBRID AMARYLLIS

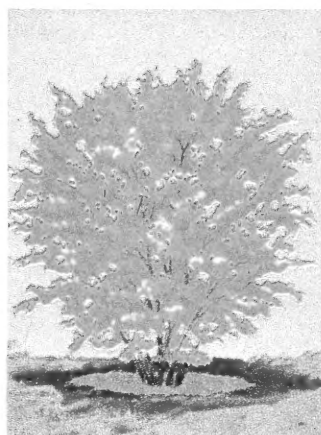
9B4—Imported hybrids with sturdy spikes of 5 inch blooms. Summer flowering if planted outdoors (not hardy). Favorite pot plants for growing indoors. Mammoth 9 to 10 inch bulbs, **65c ea.; 3 for \$1.75; Jumbo, 12 inch bulbs, 98c ea.; 3 for \$2.75.**



HARDY CUT FLOWER ASTER GARDEN

9PG5—One each color as pictured, A, B, C, D, E. (Described opposite page.) Regular \$2.25 catalog value.

5 for \$1.95



NEW LYNWOOD GOLD

9K6—(*Forsythia*) Imported Irish golden bell. Graceful, upright plants covered with deep yellow flowers each spring. Wonderful for forcing indoors. 8 to 12 in. pot size, **50c ea.; 3 for \$1.29.** 1½ to 2 ft., **95c ea.; 3 for \$2.55.** 3 ft. heavy, **\$1.45 ea.; 3 for \$3.95.**



FRAGRANT PINK SNOWBALL

9K7—(*Viburnum Carlesi*) Beautiful coral-pink buds open exquisite shell pink and pale pink to white. The intense gardenia-like fragrance is delightful. A few blooms will scent the entire home. Free blooming, handsome, hardy plants, 10 to 15 inch pot plants, **2 for 98c; 6 for \$2.50.** 15 to 18 inch field-grown plants, **\$2.45 each; 3 for \$6.95.** 2 to 3 ft. size, **\$3.95 each; 3 for \$11.50.**

BLACK PARROT TULIP

9B8—This eye-catching new black-red is a sport of La Tulip Noire. Glistening ebony, purple and maroon blend. First

REDUCED PRICES... BIG SAVINGS

3 for 49c; 12 bulbs \$1.39;
25 or more at 10c each.

6 BULBS 85c



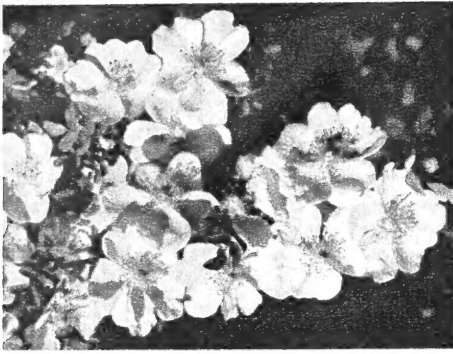
ANEMONE ST. BRIGID

9B9—Brilliant red, white, blue and pink double flowers through summer for table and garden decorations. A riot of exquisite colors. Hardy bulbs last for years. No. 1 size, ¾ to 1 inch bulbs, **10 for 69c; 18 for \$1.00; 100 for \$4.75.**



EARLIEST PEONY

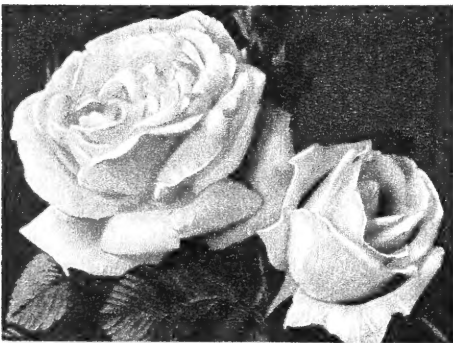
9P10—(*Officinalis Rubra Plena*) Beautiful big double red usually blooms ahead of Memorial Day as far north as Milwaukee. Recommended. 3 to 5 eye plants. **\$1.19 ea.; 3 for \$3.30.**



Father Hugo's Rose

10R15—Often called the Golden Rose of China. Named for Father Hugo, who discovered it in China. Tall growing, 4 to 5 foot bushes are a mound of gold in early spring. Perfectly hardy without protection. Plant in hardy flowering shrub border, as hedge or as specimens. 2 yr. heavy, 3 ft. blooming size, \$1.00 each.

3 FOR \$2.75



Frau Karl Druschki

10R16—The Famous White Rose of Many uses. The world renowned pure, snow-white hybrid perpetual rose that blooms throughout the season and is so hardy and rugged. Unsurpassed for large, double, long lasting blooms, superb for cutting. It is so tough, disease resistant and hardy it has many uses as planting in borders, shrub beds as well as in the rose garden. No. 1 size, 95c each; 6 for \$4.75.

3 FOR \$2.59

Christmas Rose (Pictured page 11)

10P12—(*Helleborus Niger*) Valuable and beautiful hardy garden plants grow more beautiful each year and can be divided. Plant in moist shade location where you won't disturb. Low spreading plants with handsome thick evergreen palm-like leaves. Foliage and blooms excellent for winter decorations. You may cut blooms in December, January, or February, depending on the weather and where you live. Large bell-like flowers last for weeks regardless of snow or low temperature. Select 3 yr. transplants will bloom this winter. \$1.49 each; 3 for \$3.95.

Scilla Campanulata (Pictured page 11)

10B20—(*Wood Hyacinth*) Beautiful flowers on spikes 12 to 18 inches high make lovely bouquets and are produced in such profusion the blooms fairly carpet the ground. The hardy bulbs increase and last a lifetime. They grow well in sun or shade outdoors. Easy to flower in pots. Spring Hill's imported mixture contains a fine assortment of pink, blue and white. 10 for 49c; 25 for \$1.15; 100 for \$3.95.

Beautiful, Easy to Grow LILIES HARDY WINTER VARIETIES

All lilies described and listed are measured in circumference. Sizes vary as some varieties do not grow large bulbs, but all are large blooming size and winter hardy in the North. Will bloom abundantly for you next spring, summer, and fall.

GOLD BAND LILY (Pictured page 11)

10B1—(*Auratum*) Exquisite fragrance, huge size and great beauty of blooms from July into Autumn. Dotted with crimson and center is gold striped. Imported, 6 to 8 inch bulbs 55c each; 3 for \$1.49; 6 for \$2.85.

ROSY CHINA LILY (Pictured page 11)

10B2—(*Speciosum Rubrum*) The strong 3 to 4 ft. stems produce an abundance of blooms from July into autumn of good size, great substance and depth of color. Select imported 6 to 8 inch bulbs, 55c each; 3 for \$1.49; 6 for \$2.85.

FAMOUS REGAL LILY (Pictured page 11)

10B3—America's favorite and most popular hardy lily. Great profusion of blooms often 15 to 25 on a stem throughout June and July. Beautiful long, white blooms flushed pink with creamy-gold throats and delightful perfume. Hardy bulbs multiply. 5 to 6 inch, 2 for 50c; 4 for 89c; 10 for \$1.98. Big 7 to 8 inch size, 39c each, 3 for 99c; 6 for \$1.80; 12 for \$3.48.

GIANT OLYMPIC HYBRIDS

10B4—(*Centifolium*) There is a pleasing variation in style and shape of blooms as well as colors which include icy green, creamy yellow, soft pink, chocolate, wine, and white. Huge 7 to 9 inch trumpet like blooms for several weeks through July and August. Bulbs direct from Originator, Jan de Graff. 5 to 6 inch bulbs, 49c each; 3 for \$1.35; 6 for \$2.35.

CRIMSON BEAUTY LILY (Pictured page 11)

10B5—(*Umbellatum Splendidum*) Extremely free flowering with big, upright orange-red blooms on 18 to 24 inch stems. Often 25 flowers on a stem; bulbs are hardy and easy to grow. Extra big bulbs, 7 to 8 inch, 59c each; 3 for \$1.60; 6 for \$2.95.

MADONNA LILY (Pictured on page 11)

10B6—(*Cascade Strain Candidum*) It is with great pride we offer this new improvement of the oldest known early blooming white lily. Highly resistant to disease. Larger fragrant spikes with more substance and purity of color. Bulbs increase naturally. Large 6 to 7 inch, extra low price, 59c each; 3 for \$1.60; 6 for \$2.95.

MAGIC LILY (Pictured page 11)

10B7—(*Lycoris Squamigera*) The attractive foliage dies in July. A few weeks later as if by magic the flower stems seem to pop out of the ground to a height of 2 ft.; with clusters of 5 to 12 large pink blossoms on a stem. Easily grown bulbs multiply each year. Sometimes called Hardy Amaryllis. 6 to 7 inch bulbs, 39c each; 3 for \$1.00; 10 for \$2.95. Jumbo 8 inch and up, 49c each; 3 for \$1.35; 6 for \$2.29.

DREAM LILY (Phillippeneuse)

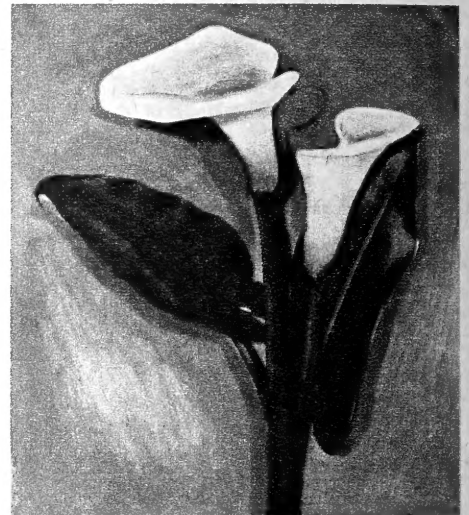
10B8—Creamy-white flowers with transparent green throats resemble Easter lilies in form but are much larger. Beautiful in your summer garden. Imported 4 to 5 inch bulbs, 60c each; 3 for \$1.65.

CORAL LILY (Tenuifolium)

10B9—Greatest abundance of small, vivid scarlet-red blooms fine for bouquets and flowering borders. 4 to 5 inch imported bulbs, 39c each; 3 for \$1.00; 6 for \$1.85.

DOUBLE TIGER LILY (Tigrinum Flore Plena)

10B10—Considered the finest and most beautiful double lily. Hardy bulbs. 4 to 5 inch blooming size, 45c each; 3 for \$1.25; 6 for \$2.35.



CALLA LILIES

The calla lilies are not winter hardy but are easily grown in the house. Attractive foliage and blooms. In May after freezing weather plant bulbs in any good soil and they flower beautifully in August and September.

YELLOW CALLA LILY

10B17—(*Elliottiana*) Magnificent free-flowering calla. Decorative green foliage spotted white. Large 2½ inch bulbs, 65c each, 3 for \$1.75; 12 for \$6.60.

WHITE CALLA LILY

10B18—(*Aethiopica or Godfrey*) The most vigorous, most prolific flowering and easiest to grow. Large 1¾ inch bulbs 70c each; 3 for \$1.95; 12 for \$7.45.

PINK CALLA

10B19—(*Rehmanni*) Unusual and uncommon. Low growing with smaller blooms but exceedingly lovely. Large 2½ inch bulbs, 65c each, 3 for \$1.75; 12 for \$6.60.

Lillies Of The Valley

10P14—Lovely fragrant, tiny, white bells on six inch stems. Excellent for corsages and decorations. Plant in shady location, perfectly hardy. Pot for indoor blooms, cover pip 1 inch. 3 for 55c; 6 for 89c; 10 for \$1.35.



HARDY LILY GARDEN SPECIAL 10B11

- 1 Auratum, 6 to 8 inch \$.55
- 1 Rosy China, 6 to 8 inch55
- 1 Regal, 7 to 8 inch39
- 1 Giant Olympic, 5 to 6 inch49
- 1 Crimson Beauty, 7 to 8 inch59
- 1 Madonna, 6 to 7 inch59
- 1 Hardy Amaryllis, 8 inch and up . . .49
- Catalog value \$3.65

ALL 7 FOR \$2.98



GOLD BAND LILY

1181 — (*Auratum*) Many massive fragrant white blooms dotted crimson with gold stripe. Description page 10. 6-8 inch bulbs, 55c each, 6 for \$2.85.

3 for \$1.49



ROSY CHINA LILY

1182 — (*Speciosum Rubrum*) Loveliest of all pink lilies. Description page 10. Select imported 6 to 8 inch bulbs, 55c each, 6 for \$2.85.

3 for \$1.49



GIANT LILY (Olympic Hybrids)

1183 — (*Centifolium*) Huge size, great profusion, lovely colors. Description page 10. 5 to 6 inch bulbs, direct from originator, 49c each, 6 for \$2.35.

3 for \$1.35



Famous REGAL LILY

1184 — America's favorite, so beautiful and dependable. Special low fall sale prices. 7 to 8 inch, 39c each, 3 for 99c, 12 for \$3.48.

6 for \$1.80



SCILLA CAMPANULATA

1185 — Splendid assortment of pink, blue, and white. Description opposite page 10. 10 for 49c, 100 for \$3.95.

25 for \$1.15



CHRISTMAS ROSE

1186 — (*Helleborus Niger*) Big white bell-like blooms in winter. 3 yr. heavy blooming size, 3 for \$3.95.

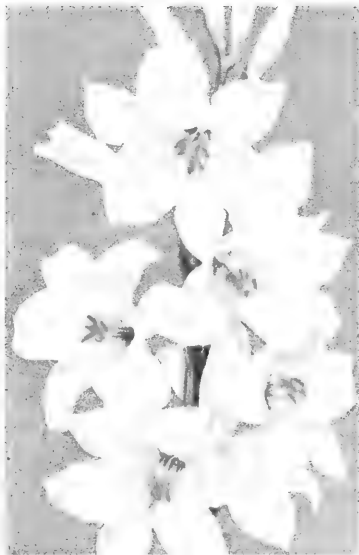
\$1.49 each



CRIMSON BEAUTY

1187 — (*Umbellatum Splendidum*) Free-flowering hardy Lily. Bulbs multiply. Description page 10. 59c each, 6 for \$2.95.

3 for \$1.60



MADONNA LILY

1188 — (*Candidum*) St. Joseph lily, famous improved Cascade Strain. Description page 10. 6 to 7 inch bulbs, 59c each, 6 for \$2.95.

3 for \$1.60



MAGIC LILY

1189 — (*Lycoris*) Unusual, beautiful. Special new low prices. Easily grown, bulbs multiply each year. Described page 10. 8 inch and up, Jumbo bulbs, 49c each, 6 for \$2.29.

3 for \$1.35



FLOWERING CRABS

Amazingly beautiful, small trees with daintiness, grace and brilliance. Even lovelier and much harder than Japanese cherries.

ELEYII 1271—Splendid European award winner with multitudes of bright rosy-crimson blooms and showy red fruit useful for jellies and bird food. Fast growing trees with bronzy red foliage. 3-4 ft. size \$1.60 each, 3 or more \$1.50. 5-7 ft. size \$2.85 each, 3 or more \$2.75 each.

FLAME 1272—Sensational new crab introduced by Minn. State Fruit Farm. Rapid growing round trees with vivid Washington cherry blossom pink blooms. In fall every branch is studded with tremendous numbers of fiery-red crabs. 4-5 ft. size \$2.75 each, 3 or more \$2.65 each; 5-7 ft. size \$3.75 each, 3 or more \$3.65 each.

DOLGA 1273—Eye catching in spring with masses of white blooms followed by fire-engine red fruits. Probably the finest fruit of all crabs for pickling and jellies. 3 to 4 ft. size \$1.45 each, 3 or more \$1.35 each; 5 to 7 ft. size \$2.60 each, 3 or more \$2.50 each.

BECHTOL'S 1274—Robust, round headed, 15 ft. trees are smothered with clusters of large, double pink blooms shaped like small roses. 2 to 3 ft. size \$2.35 each, 3 or more \$2.25 each; 5-6 ft. size, \$3.60 each, 3 or more \$3.50 each.

NEW ALMEY 1275—Huge silver dollar size blooms of brilliant glowing crimson. Considered the most colorful and best new variety. Fast growing, exceptionally nice. New low prices. 3 to 4 ft. size, \$2.45 each, 3 or more \$2.35 each; 5-7 ft. size \$3.75 each, 3 or more \$3.65 each.

MYSTERY BULB

Blooms without care, water, or soil.

Lovely blooms as pictured. Place on desk, window sill, etc. It will bloom. Surprise your friends. Plant bulbs after blooming. Dig next July for indoor blooms. Bulbs increase and are hardy in far North. Choice of: **Alba 12B17**—Pure White, **Speciosum 12B18**—Dusty Rose, **Violet Queen 12B19** Prices of above 3 imported Colchicum Blooming 1st size bulbs, 59c each; 3 for \$1.60; 12 for \$5.95.



Large, Double, Cut-flower Hardy Chrysanthemum COLOR COLLECTION

12C6—Here at Tipp City we produce over a half million chrysanthemums each year. Hundreds of the best new varieties, acres of plants, millions of blooms. We offer only the better recommended, cut-flower varieties. All are guaranteed hardy, large, double, early and profuse blooming. One each of following colors, 5 for \$1.35. All big, sturdy field grown plants. Shipped with tops broken off.

- Exhibition red.
- Exhibition white.
- Exhibition yellow.
- Exhibition bronze.
- Exhibition pink.

5 for \$1.35

Quilled Chrysanthemums

12C7—Long, rolled pointed petals on big, double blooms that resemble giant, cactus-dahlia flowers often 5 inches in diameter. All profuse flowering and striking colors. Choice of yellow, pink, white, and red. Big, field-grown clumps. (Shipped with tops broken off) 50c each; 3 for \$1.25.



SERVICE BERRY

12K12 — (*Amelanchier*) Useful for jellies, pies and eating. Also one of our best berry producing shrubs for birds and wild life. Beautiful white blooms in early spring with large red fruit clusters in summer. Perfectly hardy shrub. Bearing age, 2 to 3 ft., 75c each; 3 for \$1.95; 6 for \$3.75. 2 yr. 12-18 inch size, 50c each; 3 for \$1.25.



STAR OF BETHLEHEM

12B14 — (*Ornithogalum umbellatum*) — Lovely clusters of crispy white, star-shaped flowers on 8 inch stems each spring. Extra winter hardy, free flowering and easy to grow outdoors in sun or shade or indoors for forcing. Long lasting corsages and bouquets; bulbs multiply. Jumbo top size, 3 for 30c, 6 for 50c, 12 for 85c.



OLD FASHIONED BLEEDING HEART

12P8—(*Dicentra Spectabilis*)—Truly romantic, heart-shaped flowers of great beauty and gracefulness. Lovely in mixed bouquets. Tall growing with largest flowers. Grows best in semi-shade producing its profusion of blooms for several weeks in late spring. 69c each; 3 for \$1.95; 6 for \$3.75.

EVERBLOOMING BLEEDING HEART

12P9—(*Dicentra Exima*)—Dwarf plants grow about 1 ft. tall with finely cut, fern-like foliage that contrasts beautifully with artistic sprays of pink blooms. Flowers continuously all summer. 60c each; 3 for \$1.55; 6 for \$2.95.

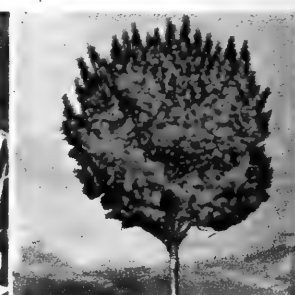
Bleeding Heart Garden Special

12PG10—2 Old Fashion Bleeding Heart, 2 Everblooming Plumy Bleeding Heart. Regular \$2.50 value.

ALL 4 FOR \$2.15

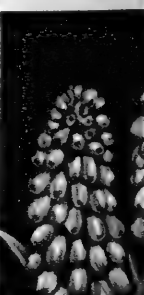
Cushion Mum Special

12C11—One each Pink, Red, Yellow, White, Bronze, and Violet. Fully guaranteed. Improved double early free flowering hardy strains that will bloom for you next year. Big field grown clumps shipped with tops broken off. (Unlabeled). 50c each, 3 for \$1.25; 6 for \$2.40; 10 or more 37½c ea.



PURPLE LEAF PLUM

12K15—(*Prunus New-pert*) In spring it has myriads of light pink blooms scattered like thousands of stars through the brilliant red foliage. Leaves stay red all season. Hardy and colorful, grow 10 to 15 feet tall. 3 to 4 ft. size, \$1.65 each; 2 for \$2.95. 5 to 6 ft., \$2.75 each; 2 for \$5.20; 6 for \$14.95.



GRAPE HYA

12B16—(*Muscenly Blue*)—I beautiful, ea flowering bulb gentian blue. hardy bulbs in will grow i. shade. Splendi garden, also f flowering in t. Top size jumbo for 69c; 25 for \$2.48; 100

From _____
 Street _____
 City _____
 State _____

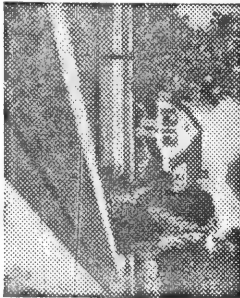
ED

OUTLET

MIDGET HEDGE

HARDEST PRIVET HEDGE

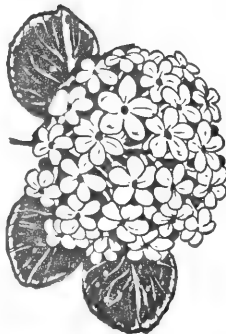
OBH1—(Amur River) Compact, fast growing hardy variety, popular in the North. Clip to any height. Sturdy, field grown plants about 1 foot tall. Set 1 ft. apart for dense hedge. Larger sizes, see catalog. 10 for \$1.79
 25 for \$2.95 50 for \$5.50
 100 for \$9.95



OUR GUARANTEE TO YOU

We guarantee high quality stock, exactly as represented, government inspected, true to name and to arrive safely in healthy, live growing condition. Any plants that reach you otherwise will be replaced free. **REPLACEMENTS**—We guarantee our plants to grow, bloom and produce if given intelligent handling, proper planting and reasonable care. Weather conditions, carelessness and lack of experience by the planter are conditions beyond our control regardless of this. Spring Hill will replace any plants that fail to grow at half the original purchase price if notice is made three months after delivery of your order. Please enter complaints immediately and be sure to return your original order blank or sales slip to us or adjustment cannot be made. It is mutually agreed that our liability cannot be greater than purchase price. **GUARANTEED SATISFACTION.**

FRAGRANT PINK SNOWBALL



OBK2—(Viburnum Carlesii) Brilliant rosy-red buds open exquisite shell-pink. Large, snowball shaped blooms are intensely fragrant, scented the entire yard. Special low price, 10 to 15 inch size, 2 for 98c.

6 for \$2.50

FOLD No. 2

FOLD No. 2

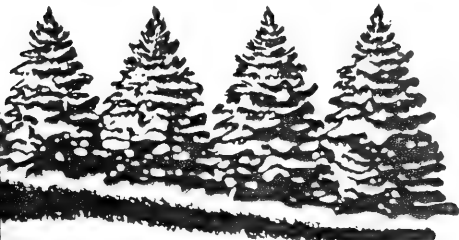
USE
 LETTER
 POSTAGE
 HERE

NURSERIES

and Consultants

TIPP CITY, OHIO
 (MIAMI COUNTY)

S AND SUPER MARKET



Catalog Number	Size	Price for 5	Price for 10	Price for 25	Price for 100
E6	8-10 in.	1.35	2.25	4.95	17.50
E7	5-7 in.	2.25	3.95	9.35	35.00
E8	8-10 in.	2.35	4.40	10.60	39.95
E10	6-8 in.	2.35	4.40	10.60	39.95
E11	6-8 in.	2.50	4.75	11.25	42.50
E12	3-6 in.	.90	1.45	3.35	12.50
E14	3-6 in.	.85	1.40	3.20	12.00
E15	3-6 in.	.85	1.40	3.20	12.00
E16	5-7 in.	1.00	1.75	3.95	15.00
E17	5-7 in.	.90	1.45	3.35	12.50
E18	4-6 in.	1.00	1.75	3.95	15.00
E19	8-10 in.	2.35	4.40	10.60	39.95
E20	8-10 in.	2.35	4.40	10.60	39.95

lid in the
 for winter
 the house.
 o bulbs. 10
 \$1.50; 50
 for \$4.90.

all winter for bird food.
 One of the finest tall
 growing hardy shrubs.
 12 to 15 inch, pot plants,
 50c each; 3 for \$1.25. 2
 to 3 ft., 95c each; 3 for
 \$2.75.

flowers. One of our earli-
 est long blooming spring
 bulbs. **Blooming size
 bulbs, 29c each; 3 for 69c;
 6 for \$1.15; 12 for \$1.95.
 18 or more bulbs at 15c
 each. Order liberally at
 this special low price.**

bronze, yellow, white
 and purple. Guaranteed
 finest new expensive va-
 rieties. **Big field clumps
 with tops broken off for
 shipping. 55c each; 3 for
 \$1.35; 6 for \$2.50.**



oriental POPPIES

varieties with brilliant blooms large as coffee
 ten larger). In late spring their brilliant
 without equal. All plants large field-grown.

OF LIVERMORE 13P9—Finest free flowering
 ison with black center. **60c each, 3 for \$1.50.**

GLOW 13P10—Huge double salmon-orange.
 prizes. **65c each, 3 for \$1.65.**

ERGIA 13P11—Brilliant cherry-red of tre-
 size with good substance. **65c each, 3 for**

ZABETH 13P12—Bright rosy-pink. A good
 ower and profuse blooming. **60c each, 3 for**

Oriental Poppy Special

one each of garden of four varieties listed,
 led.

- Livermore, crimson . . . 60c
 - low, salmon-orange . . . 65c
 - ergia, cherry-red . . . 65c
 - abeth, rosy-pink . . . 60c
- Catalog value \$2.50

**ALL 4
 FOR \$1.95**

Oriental Poppies bi-color

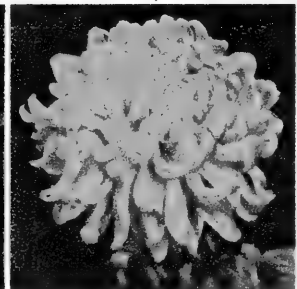
o keep varieties in balance Spring Hill
 is money saving offer. All big No. 1 giant
 n plants that will bloom next spring. One
 Salmon, Pink, unlabeled (No broken col-

3 FOR \$1.25



NIA

(Veitchi) — Fra-
 ee blooming va-
 xcellent house
 Enjoy their ex-
 and exquisite
 , waxy, white
 Not winter hardy



ENGLISH MUMS

north of Norfolk, Va.
 Growing instructions and
 plant food sent with each
 order. **8 to 10 inch size,
 59c each; 3 for \$1.55. Big
 12 to 15 inch size, \$1.75
 each; 3 for \$4.95.**

13C8—Finest, large, dou-
 ble flowering varieties for
 exhibiting. All good vig-
 orous growing, healthy,
 free flowering. We offer
 the best of several hun-
 dred varieties tested.
 Choice of red, pink,
 white, orange, yellow and
 purple. Big field clumps
 with tops broken off for
 shipment. **55c each; 3 for
 \$1.35; 6 for \$2.50; 10 or
 more alike or assorted at
 40c each.**

REMITTANCE . . .

Our terms are cash with order. Money should be sent by check, postal money order, express money order, draft, or registered mail. No C. O. D. orders.

WAR STAMPS ACCEPTED: Mail War Stamps in payment for your plant order from Spring Hill. In this way Uncle Sam will have the money; **YOU HAVE** the plants; Spring Hill will purchase the **GOVERNMENT BONDS**. Spend your money where it will do the most good.

IMPORTANT—Please use separate sheet of paper for all correspondence and questions requiring an answer, with your name and address to insure a prompt reply.

You will be doing your friends and Spring Hill a favor if you write the names and addresses of anyone who will be interested in receiving a copy of this catalog. Thank you.

FOLD No. 1

VISIT OUR GROWING FARM



LOW PRICES FOR SMALL PLANTING EVERGREENS

It's economical, it's easy, it's interesting to plant and grow your evergreens. Excellent varieties for hedges, windbreaks, Christmas trees, wood lots and landscaping.

American Arbor Vita
Globe Arbor Vita
Pyramid Arbor Vita
Juniper Pfitseriana
Blue Pfitseriana
Spruce, Black Hill
Spruce, Colorado Bl
Spruce, Norway
Pine, Austrian
Pine, Scotch
Pine, Dwarf Mugho
Taxus Cuspidata
Taxus Hicksii

ORDERS ACKNOWLEDGED. We acknowledge all orders by letter when received. When we ship your order, your original order sheet will be returned to you with the merchandise ordered, for checking, **IN EVENT OF ANY ERROR, CLAIM OR ADJUSTMENT** it will be necessary for you to return your original order with your letter. If your order is not filled completely you will be advised whether or not balance will follow later or amount of any shortage refunded to you. Remember we will be unable to correspond with you about an order shipped without having your original order returned to us.

IMPORTANT — POSTAGE. SEE OUR CATALOG FOR PACKING AND TRANSPORTATION ON ORDERS. If you do not include postage your order will be shipped by express collect or we will bill you for the postage.

Most orders can best be shipped by parcel post if not too large for the mail.

Ohio customers please add 3% Ohio Sales Tax.

FOLD No. 1

SPRING HILL

Horticulture Specialists



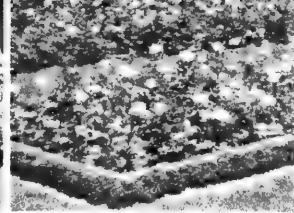
FOLD No.



BUSH HONEYSUCKLE



SPIREA VAN HOUTTEI



MIDGET HEDGE

HARDY HEDGES PLANT LIVING FENCES FOR ECONOMY AND BEAUTY

AMUR RIVER NORTH PRIVET
13H1—(*The hardiest privet hedge*) Beautiful, upright, fast growing, compact hedge. Ideal for clipped hedge. Plant one foot apart. Most popular privet in the North. 9-12 in., 10 for \$1.79; 25 for \$2.95; 100 for \$9.95. 18-24 in., 10 for \$2.65; 25 for \$5.50; 100 for \$19.50. 2-3 ft., 10 for \$3.50; 25 for \$7.50; 100 for \$27.50.

BUSH HONEYSUCKLE
13H2—(*Lonicera Tartarica Rosea*)—Extra hardy, rapid growing, tall plants. Grow well in sun or shade. Filled with rose-pink blooms through spring, followed by red berries that make excellent food for birds. Hardy in Northern states. Plant 2 ft. apart for low, clipped hedge. Plant 3 to 4 ft. apart for tall, informal screen. 18-24 in., 10 for \$2.95; 25 for \$6.65; 100 for \$23.50. 3-4 ft., 10 for \$8.50; 25 for \$19.50; 100 for \$72.50.

50 or more hedge plants of one size and one variety at 100 rate (example, 60 Bush Honeysuckle 3-4 ft. size 60 X 72 1/2 c = \$43.50).

POPULAR HARDY BRIDAL WREATH
13H3—(*Spirea Van Houttei*)—The above picture displays a colorful untrimmed hedge of bridal wreath. The strong, hardy plants with graceful arching branches are filled with white blooms each spring. Easy to grow, does well in sun or shade. 9-12 in., 10 for \$1.75; 25 for \$2.90; 100 for \$8.95. 12-18 in., 10 for \$2.25; 25 for \$4.95; 100 for \$17.50. 2-3 ft., 10 for \$5.95; 25 for \$13.75; 100 for \$49.50.

MIDGET HEDGE
13H4—(*Teucrium Chamaedry's*)—Splendid low growing, hardy plants resembling dwarf Boxwood in foliage and growth. Recommended for use where boxwood is not hardy and a low, formal border for flower or rose beds is desired. Pot size, 10 for \$2.75; 25 for \$5.65; 100 for \$19.95. Field grown, 10 for \$4.75; 25 for \$11.00; 100 for \$39.50.



Oriental POPPIES

Choice varieties with brilliant blooms large as coffee cups (often larger). In late spring their brilliant colors are without equal. All plants large field-grown.

- BEAUTY OF LIVERMORE 13P9**—Finest free flowering dark crimson with black center. 60c each, 3 for \$1.50.
- SALMON GLOW 13P10**—Huge double salmon-orange. Wins the prizes. 65c each, 3 for \$1.65.
- WURTEMBERGIA 13P11**—Brilliant cherry-red of tremendous size with good substance. 65c each, 3 for \$1.65.
- HELEN ELIZABETH 13P12**—Bright rosy-pink. A good strong grower and profuse blooming. 60c each, 3 for \$1.50.

Oriental Poppy Special

13P15—One each of garden of four varieties listed, each labeled.
 Beauty of Livermore, crimson . . . 60c
 Salmon Glow, salmon-orange . . . 65c
 Wurtembergia, cherry-red . . . 65c
 Helen Elizabeth, rosy-pink . . . 60c
 Catalog value \$2.50

ALL 4 FOR \$1.95

Oriental Poppies bi-color

13P14—To keep varieties in balance Spring Hill makes this money saving offer. All big No. 1 giant field-grown plants that will bloom next spring. One each Red, Salmon, Pink, unlabeled (No broken collections).
3 FOR \$1.25

HARDY GROUND-COVER PLANTS

If you are having trouble growing grass in shady places or mowing grass on steep slopes, here are plants ideal for such conditions. For large areas write for quantity prices and suggestions.



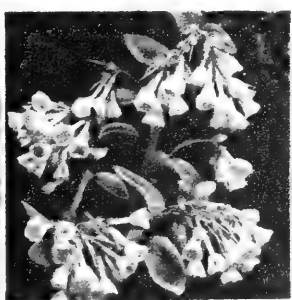
TRAILING MYRTLE (Periwinkle)
13P5—(*Vinca Minor*)—Fast, spreading, low trailing vines 3 to 6 inches high carpet the ground and stay a nice glossy green winter and summer. Grows in dense shade or sunlight and is fine for controlling erosion on steep slopes. Lovely sky-blue flowers in early spring. Pot plants, 5 for \$1.55; 10 for \$2.40; 25 for \$4.55; 100 for \$17.50. 1 yr., 10 for \$1.95; 25 for \$3.75; 100 for \$12.50.
 Write for prices on Pachysandra, English Ivy, Fragrant Honeysuckle, and Euonymus.



VIBURNUM
13K16—(*Viburnum*)



CRANBERRY
13K16—(*Viburnum Americana*) A handsome ornamental shrub. Pure white flowers in late spring; neat, clean foliage on bushy plants. Red fruit clusters on plants all winter for bird food. One of the finest tall growing hardy shrubs. 12 to 15 inch, pot plants, 50c each; 3 for \$1.25. 2 to 3 ft., 95c each; 3 for \$2.75.



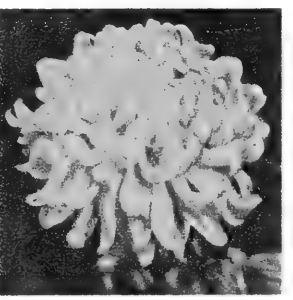
VIRGINIA BLUE BELLS
13B17—(*Mertensia*) Hardy, permanent plants to flower in your garden each spring. Survives best in shady locations. Each plant is filled with clusters of clear blue flowers. One of our earliest long blooming spring bulbs. Blooming size bulbs, 29c each; 3 for 69c; 6 for \$1.15; 12 for \$1.95. 18 or more bulbs at 15c each. Order liberally at this special low price.



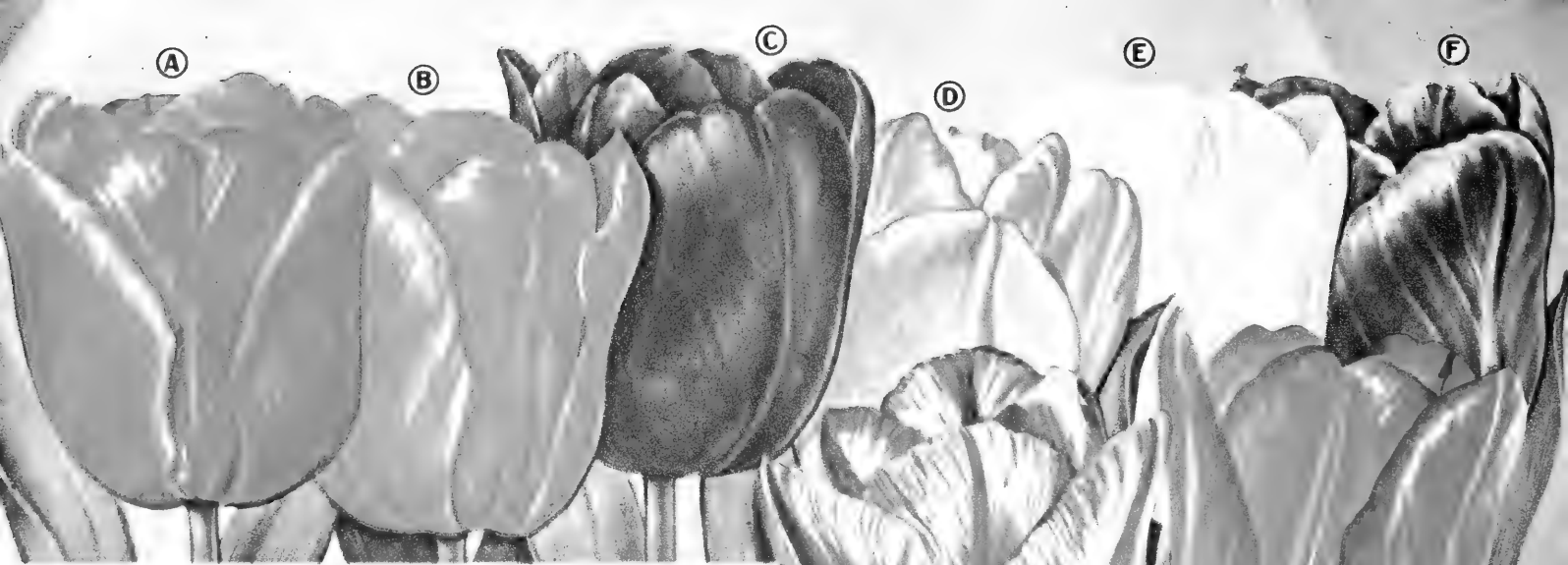
SPOON MUMS
13C6—All have large blooms with long, narrow petals that are spoon shaped at tips. All varieties are early blooming, hardy and excellent for bouquets. Choice of red, bronze, yellow, white and purple. Guaranteed finest new expensive varieties. Big field clumps with tops broken off for shipping. 55c each; 3 for \$1.35; 6 for \$2.50.



GARDENIA
13K7—(*Veitchi*)—Fragrant, free blooming variety. Excellent house plants. Enjoy their expensive and exquisite fragrant, waxy, white blooms. Not winter hardy north of Norfolk, Va. Growing instructions and plant food sent with each order. 8 to 10 inch size, 59c each; 3 for \$1.55. Big 12 to 15 inch size, \$1.75 each; 3 for \$4.95.



ENGLISH MUMS
13C8—Finest, large, double flowering varieties for exhibiting. All good vigorous growing, healthy, free flowering. We offer the best of several hundred varieties tested. Choice of red, pink, white, orange, yellow and purple. Big field clumps with tops broken off for shipment. 55c each; 3 for \$1.35; 6 for \$2.50; 10 or more alike or assorted at 40c each.



IMPORTED GIANT DARWIN TULIP SALE

Eight of the most beautiful, most dependable outdoor varieties. World famous for magnetic color, exquisite form and massive size. PLANT NOW—this fall is the only satisfactory time to plant for blooms next spring.

- (A) **CAMPFIRE—14B1**—Magnificent flaming fire-red of exquisite form.
- (B) **GOLDEN HARVEST—14B2**—Beautiful large buttercup yellow.
- (C) **QUEEN of the NIGHT—14B3**—Best deep rich velvety maroon.
- (D) **PRINCESS ELIZABETH—14B4**—(Maxima) Best vivid rosy-pink.
- (E) **ZWANENBURG—14B5**—One of the very finest clean pure white.
- (F) **SCOTCH LASSIE—14B6**—Beautiful deep lavender, dark blue base.
- (G) **CORDELL HULL—14B7**—Handsomely striped red and white. Superb.
- (H) **PRINCESS MARGARET ROSE—14B8**—Primrose-yellow edged red.

Choice of 8 tulips pictured and described on this page. Large imported 11 to 12 cm. bulbs. 5 of a kind, 49c; 10 of a kind, 95c; 25 of a kind, \$1.98; 50 or more bulbs of a kind, 7c each.



Special DARWIN TULIP Mixture

Spring Hill's quality bulbs as low as 4½c each
14BG9—Most remarkable race of tulips. Distinguished by their massive size, exquisite form, vigorous growth and vivid colors. Well balanced hand made mixture from best varieties of Red, Yellow, White, Pink, Orange and Purple. Unsurpassed for beds, borders and mixed plantings. Fully Guaranteed to bloom satisfactorily next spring and many more years. Large imported 11 to 12 cm. bulbs, 18 bulbs \$1.00; 40 bulbs \$1.98; (300 or more bulbs 4½c each.)

100
bulbs
\$4.89

14

HYACINTH Mixed Bulb Special

14BG10—New reduced low prices. These fine imported Holland grown bulbs offered in rainbow mixture of red, white, blue, pink, and yellow hand made from named varieties. BIG SAVINGS. Medium 14 to 15 cm. size Guaranteed to bloom very satisfactory in your garden next spring.

5 bulbs 69c; 25 bulbs \$2.75;
50 or more bulbs 10c each

10 bulbs \$1.29



New Giant DAFFODIL DIOTIMA

14B11—Double Nose, #1 Jumbo top size bulbs. Last year \$1.25 each. New low price. (Complete description see opposite page)

3 for 98c



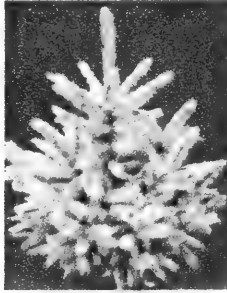
SALE SPRINGHILL'S SENSATIONAL EXTRA VALUE PAGE



SHASTA DAISY

16P1 — (*May Queen*) The finest new imported variety. Hundreds of large blooms in May and June for long lasting bouquets. 2 yr. **2 for 48c.** Get another for 1c.

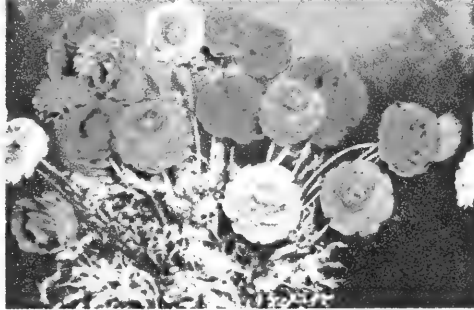
Sale price, 3 for 49c



BLUE SPRUCE

16E2 — (*Picea Pun-gens Glauca*) Good blue spruce add to the value of property. Grows into tall specimen plants of perfect shape, 4 years old, 5 to 7 inch, **2 for 98c.** Get another for 1c.

Sale price, 3 for 99c



RANUNCULUS GIANT HYBRIDS

16B3—Spring Hill's Ranunculus are the giant florist strain with flowers up to 2 inches in diameter. Big, double, red, pink, orange, yellow and white flowers. Each bulb produces several blooms. In fall dig and care for same as gladiolus. Pot and force for indoor blooms. *First size*, 5/8-3/4 inch dia. **9 for 89c.** Get another for 1c.

Sale price, **10 for 90c**



WHITE BIRCH

16T4 — Handsome, well shaped trees with attractive bark and golden autumn foliage. Plant 3 or more trees in one hole for clump effect. 1 1/2 to 2 ft. size. **3 for 98c.** Get another for 1c.

Sale Price, 4 for 99c



HARDY HIBISCUS

16P5 — (*Mallow Marvel*)—Largest blooming perennial, pink, red, white pastel colors. (No choice of colors). Blooms throughout summer. Big plants, **2 for 50c;** Get another for 1c.

Sale Price, 3 for 51c



OPHIR YELLOW DAYLILY

16P16 — (*Hemerocallis Ophir*) Rich deep golden yellow flowers during hot summer in profusion. A reliable, hardy, vigorous growing and prolific blooming variety offered at new low price. **2 for 89c.** Get another for 1c.

SALE PRICE, 3 for 90c

1 CENT SALE SHADE TREES

Outclassing all competition in small, straight, healthy transplanted trees. Larger, better rooted, faster growing than seedlings.

MT. ASH **16T7**—(*Sorbus*) (Brilliant Red berries) 6-8 ft. size, \$4.90 each. **SALE PRICE 2 for \$4.91**

SILVER MAPLE **16T8**—(Fastest growing Maple) 6-7 ft. size, \$2.35 each. **SALE PRICE 2 for \$2.36**

WHITE BIRCH **16T9**—(Picturesque bark, foliage) 5-7 ft. size, \$3.95 each. **SALE PRICE 2 for \$3.96**

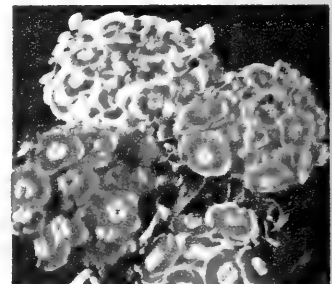
NORWAY MAPLE **16T10** — (Beautiful) 3-4 ft. size, \$1.50 each. **SALE PRICE 2 for \$1.51**

SYCAMORE **16T11** — (*Platanus Occidentalis*) (Fast growing, 6-7 ft., \$2.95 ea. **SALE PRICE 2 for \$2.96**

SILVER MAPLE **16T12** — (Fastest growing Maple) 4-5 ft. size, \$1.25 each. **SALE PRICE 2 for \$1.26**

HONEY LOCUST **16T14**—(Improved thornless) 6-8 ft. size, \$4.50 each. **SALE PRICE 2 for \$4.51**

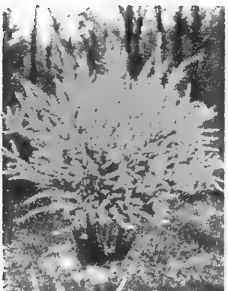
SYCAMORE **16T15**—(Special Sale) 3-4 ft. size, 69c each. **SALE PRICE 2 for 70c**



HYBRID GIANT SWEET WILLIAM

16P6 — Select strain imported direct from Holland. Giant blooms, rainbow colors during May and June. 4th year offered, amazing beauty, size, and abundance of blooms. **3 for 75c.** Get another for 1c.

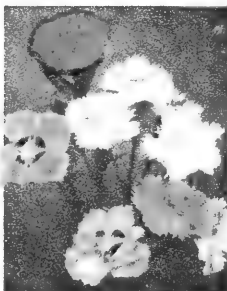
Sale price, 4 for 76c



Golden Bell FORSYTHIA

16K17 — (*Spectabilis*) Improved giant flowering variety, rich, golden color. One of first shrubs to bloom in spring. 3 ft. size, **\$1.00 each.** Get another for 1c.

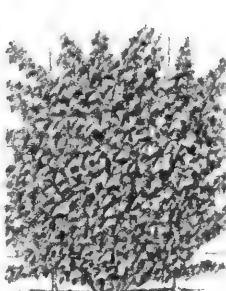
Sale price, 2 for \$1.01



Fragrant HARDY PINKS

16P18 — (*Dianthus Plumaris*) (Highland Hybrids) Lovely sweet scented blooms of pastel colors during May and June. Big plants, **2 for 65c.** Get another for 1c.

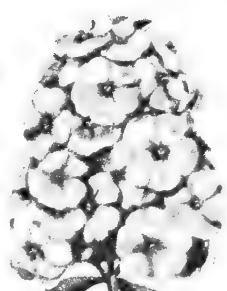
Sale price, 3 for 66c



Evergreen WALL VINE

16V19 — (*Euonymus Colorata*) Climbs brick or concrete without support. Stay green through winter. Valuable as ground cover & vine. **3 yr. \$1.65 each.** Get another for 1c.

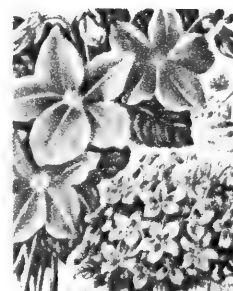
SALE PRICE 2 for \$1.66



Hardy PHLOX

16P20—Mostly the fine varieties listed in last spring's catalog. Guaranteed a well-blended mixture of rainbow colors. Guaranteed satisfaction. **2 yr. blooming size, 3 for 98c.** Get another for 1c.

Sale Price, 4 for 99c



Fragrant Hardy VIOLETS

16P21—(*Royal Robe*) The richest deepest royal purple. Blooms in abundance spring and fall. Hardy, dependable plants can be divided. **2 for 98c.** Get another for 1c.

Sale Price, 3 for 99c



Polka Dot Tulips

16B22 — (*Ossi Oswaldi*) Rare and beautiful. Opening white with petals edged cherry-rose. This color spreads through the large blooms, **5 for 59c.** Get another for 1c.

Sale Price, 6 for 60c

FINEST HARDY SHRUBS

- Beautiful Blooms and Berries
- Colorful Foliage and Branches

COTONEASTER DIVARICATA—17K12—Buy this high class shrub at new low prices. Thick, deep lustrous, small leaves with crimson autumn tints. Small pink jewel-like flowers in spring, brilliant red berries in fall. 10 to 15 inch pot plants, 50c ea.; 3 for \$1.29. 3 ft., 3 yr. size, 98c ea.; 3 for \$2.75.

FRAGRANT PINK SNOWBALL (See color page 9)
RED BARBERRY (See color and description page 24)

SPIREA VAN HOUTTEI (*Bridalwreath*)
17K14—The famous all purpose, dependable shrub. Flowers are in flat clusters an inch or more across, thickset on spreading branches. Plants are a mass of white in full bloom. Most planted of all hardy shrubs. Easy to grow in sun or shade, good or poor soil. See page 13 for low-priced hedging. Good 12 to 18 inch, 3 for 79c; 6 for \$1.45. Better, 18 to 24 inch, 40c each; 3 for 98c. Best 2 to 3 ft., 69c each; 3 for \$1.95

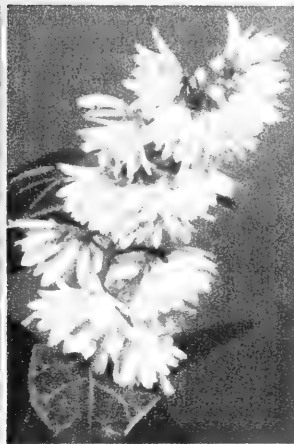
SPIREA THUNBERGI (*Feather Spirea*)
17K16—Attractive bushy plants grow 3½ to 5 ft. tall. Pure white blooms fill plants for several weeks each spring. Light, airy feather-like tiny leaves. Good, 12 to 18 inch size, 40c each; 3 for 98c. Best, 2 to 3 foot size, 75c each; 3 for \$1.95.

FAMOUS OAK LEAF HYDRANGEA—17K17—(*Quercifolia*)—Famous for its large, artistic indented and somewhat ruffled oak-like leaves which turn to beautiful colors in the autumn. Giant flower heads in abundance. A rare and beautiful shrub which grows well in shade or sunlight. Good, 12 to 18 inch, 70c each; 3 for \$1.75. Best, 18 to 24 inch, \$1.10 each; 3 for \$2.95.

EVERBLOOMING DOUBLE KERRIA—17K18—(*Japonica Flora Plena*) Graceful, compact and neat low growing, hardy shrubs filled with thousands of fluffy golden ball-shaped blooms. Unusual and excellent. 2 year, 12 to 18 inch, 65c each; 3 for \$1.65. 3 year, 2 to 3 ft., 90c each; 3 for \$2.50.

EVERBLOOMING DWARF SPIREA — 17K19 — (*Anthony Waterer*) Low, mound-like plants filled with bright rose-red flowers resembling a cushion mum in late spring with scattering blooms all season. 2 yr., 9 to 12 inch, 40c each; 3 for 98c. 3 yr., 12 to 15 inch, 65c each; 3 for \$1.69. 3 yr., heavy, 15 to 18 inch, 85c each; 3 for \$2.25.

ROSE WEIGELIA—17K20—(*Abel Carreri*) The most colorful and profuse blooming. Big clusters of rosy-pink flowers in such profusion they hide the foliage for weeks each spring. Scattering blooms all season. 2 yr. 12 to 18 in., 37c each; 3 for 89c. 2 to 3 ft. size, 75c each; 3 for \$1.95.



SMOKE TREE

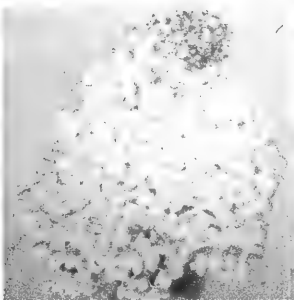
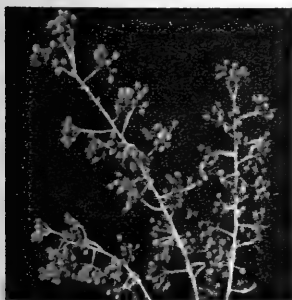
17K1—(*Rhus cotinus*) Attractive tree-like shrub enveloped in showy masses of purplish-gray, misty flowers for many weeks during mid-summer. Bright red and gold autumn foliage. Hardy, easy to grow. 3 yr., 18 to 24 inch, \$1.10 ea.; 3 for \$2.95. 3 yr., 2 to 3 ft., \$1.50 ea.; 3 for \$3.95. 4 yr., 4 ft., \$1.90 ea.; 3 for \$5.25.

DEUTZIA

17K2—(*Pride of Rochester*) Prized for its profusion of beautiful, large, double white flowers with pink tinge. One of the most neat and colorful, fast growing, tall upright growing shrubs. A choice variety that exceeds all deutzia in size of blooms. 12 to 18 inch, 40c each; 3 for 98c. Big, 2 to 3 ft., 80c each; 3 for \$2.15.

TEA SNOWBALL

17K3—(*Viburnum Setigerum*)—This excellent shrub belongs in the elite class. Lovely flat snow-white blooms in spring followed by tremendous clusters of brilliant red berries through autumn and early winter. Excellent growth habit. Pot size, 8 to 10 inch, 65c each; 3 for \$1.75. 2 to 3 ft. size, \$1.50 each; 2 for \$2.85.



ARONIA BRILLIANT

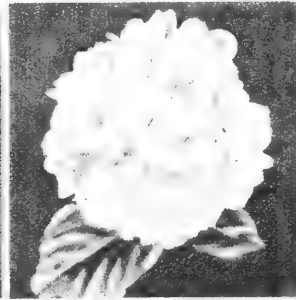
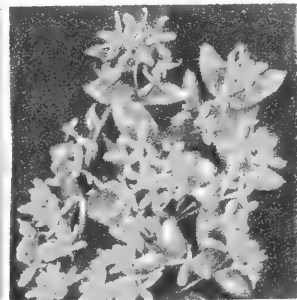
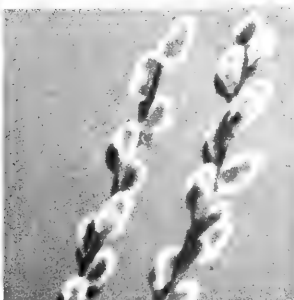
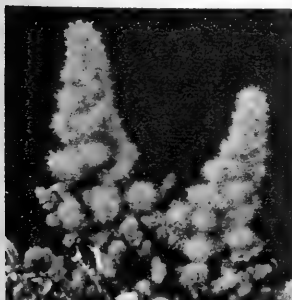
17K4—Dense low growing (4 to 5 ft.) hardy shrub with glossy green foliage. Filled with white blooms in spring and cherry-red berries in autumn and winter. 2 to 3 ft. size, 80c ea.; 3 for \$2.15. 12 to 18 inch seedlings, 40c ea.; 3 for 98c.

HYDRANGEA P. G.

17K5—Massive snowy-white flowers in late August change to beautiful rose-pink color and remain pretty for weeks. Winter hardy. 12 to 18 inch, 60c ea.; 3 for \$1.50. 18 to 24 inch 80c ea.; 3 for \$2.15. 2 to 3 ft., \$1.00 ea.; 3 for \$2.69.

BEAUTY BUSH

17K6—(*Kolkwitzia*) Graceful, tall shrubs filled with thousands of blooms each spring. One of the beautiful hardy shrubs from the Orient. 12 to 18 in., 45c ea.; 3 for \$1.10. 18 to 24 in., 65c ea.; 3 for \$1.65. 3 to 4 ft., \$1.00 ea.; 3 for \$2.75



BOUQUET SPIREA

17K7—(*Macrothya*) New everblooming spirea with huge 6 to 12 inch spikes of lovely pink flowers. Long lasting and beautiful for cutting all season. 12-18 inch, 49c each; 3 for \$1.30. 3 ft., 95c each; 3 for \$2.65.

GIANT PUSSY WILLOW

17K9—(*Caprice*) The genuine cut-flower strain. It unfolds large silvery-pink catkins 1 to 2 in. long. Cut branches during winter for bouquets. 12-18 inch, 40c each; 3 for \$1.00. 2 to 3 ft. 75c each; 3 for \$1.95.

BUSH HONEYSUCKLE

17K8—(*Red Flowering L. Zabelli*) Rapid growing, tall, hardy shrubs for sun or shady locations. Highest rated and most colorful variety. 1½ ft., 39c ea.; 3 for \$1.00. 3 to 4 ft., 85c ea.; 3 for \$2.25; 10 for \$6.95.

Old Fashioned Snowball

17K10—(*Viburnum opulus sterilis*)—Fine, big, crispy white blooms fill plants for several weeks in May. Excellent for bouquets, hardy plants. 12 to 18 inch, 60c each; 3 for \$1.55. 2 to 3 ft., 95c each; 3 for \$2.50.

TREE BITTERSWEET

17K11—(*Euonymus yedoensis*) Tall growing (8 to 10 ft.) hardy shrubs are filled with thousands of bittersweet-like fruits autumn and winter. 12 to 18 inch size, 65c ea.; 3 for \$1.75. 2 ft., 98c ea.; 3 for \$2.70.

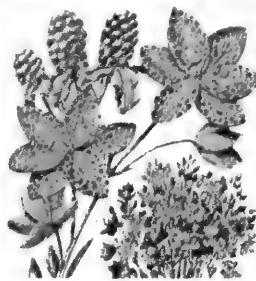
Beautiful Hardy Flowers

Grow Each Year
Without Replanting



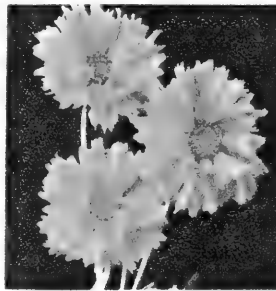
HARDY SWEET PEAS

18P1 — Large, fragrant flowers in profusion throughout summer. Hardy, fast climbing vines that grow for years without replanting. Assorted colors of red, pink, white (no choice of colors, mostly red). **30c ea.; 3 for 75c; 6 for \$1.35.**



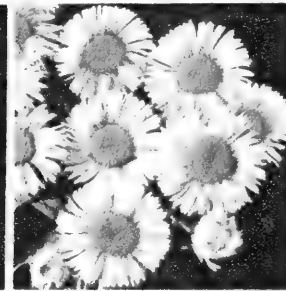
BLACKBERRY LILY

18P2—(*Pardanthus Chinensis*)—Elegant flowers of old gold, bronze, and copper suffused with red dots for many weeks in July and August. Glistening clusters of black seeds resembling blackberries. Plants multiply. **2 yr., 35c each; 3 for 90c.**



COREOPSIS

DOUBLE SUNBURST 18P3—Finest and most showy of all coreopsis. Rich golden-yellow double blooms in great abundance for cutting and garden display throughout summer. Easy to grow and hardy. **30c ea.; 3 for 75c.**



BLUE FRINGED DAISY

18P4—(*Erigeron*)—Beautiful clusters of azure blue flowers that bloom for several months each summer. Excellent for cutting. Especially hardy and easy to grow. Plants can be divided. **50c each; 3 for \$1.25; 6 for \$1.90.**



RED HOT POKER

18P5—(*Tritoma Spitfire*) New!! The richest colored most winter hardy variety grown. Abundance of stately blooms August through September. Superb for long lasting bouquets. Can be divided. **49c each; 3 for \$1.20.**



HARDY HOLLYHOCKS

18P6—(*Double Triumphs*) Imported hybrids of most vivid and richest colors of white, pink, scarlet, crimson, yellow and variegated. Huge, double and semi-double fringed flowers on long, strong stems. Colorful blooms 4 to 6 weeks. Big field plants, **2 for 50c; 5 for \$1.00; 10 for \$1.89.**



NEW SHASTA DAISY

18P7—(*Mark Riegel*)—Gracefully arranged double row of long snow white petals. The greatest, most dependable new summer cutting variety. Recurrent blooms all season. Special low prices. **2 yr., 69c ea., 3 for \$1.95.**



BLACK MAGIC IRIS

18P8—Exquisite rich velvety purple (really black) with satin sheen. Blooms in early spring and again in the fall. Husky vigorous plants grow only 18 to 22 inches tall. Strong plants **60c each; 3 for \$1.69.**



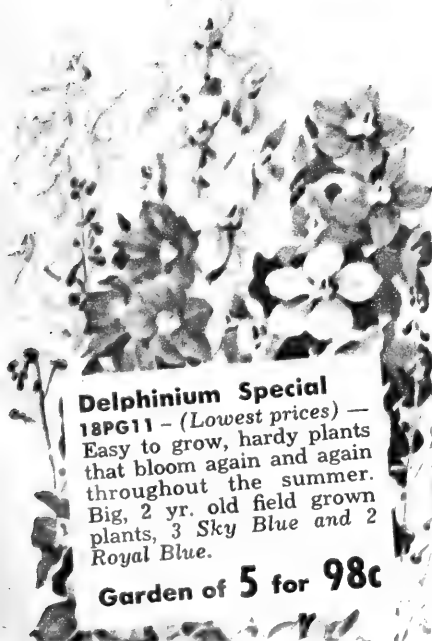
SHASTA DAISY

18P9—(*Alaska*)—One of the largest and most satisfactory daisies. Enormous flowers, of pure white with gold centers, in abundance through June and July. Extremely hardy of easy culture. **29c ea.; 3 for 70c; 6 for \$1.25.**



CROFT WAY PINK

18P10—(*Monarda*)—Extra large, clear, rich pink that blooms freely during July and August. Hardy, easy to grow plants can be divided every second year. Now offered at reduced prices. **30c each; 3 for 75c.**



Delphinium Special

18PG11—(*Lowest prices*)—Easy to grow, hardy plants that bloom again and again throughout the summer. Big, 2 yr. old field grown plants, 3 *Sky Blue* and 2 *Royal Blue*.

Garden of **5 for 98c**

DELPHINIUMS

SUPERB PACIFIC HYBRIDS

18P12—Magnificent spikes on tall, strong stems 3 to 6 ft. tall. Filled with individual flowers often as large as silver dollars. Harmonious colors of deepest violet through lavender, pink, light blue and mauve. Without question, the world's finest strain for size, beauty, freedom of bloom, hardiness and healthiness. Assorted colors only. **45c each; 3 for \$1.15; 6 for \$2.10.**

DELPHINIUM BELLADONNA

18P14—Plants are not as tall as the popular hybrids but produce many more bloom spikes especially nice for cutting. Strong, wiry stems are 3 to 4 ft. tall and the blooms are produced through spring and again in fall. Very hardy and of easy culture. **30c each; 3 for 75c; 10 for \$1.95.**

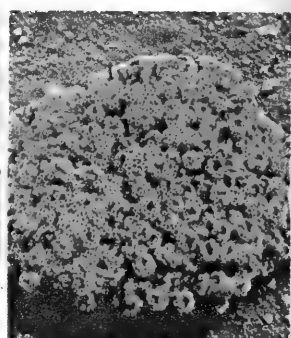
DELPHINIUM BELLAMOSA

18P15—Identical in every way to Belladonna except the blooms are a deep, rich blue. **30c each; 3 for 75c; 10 for \$1.95.**



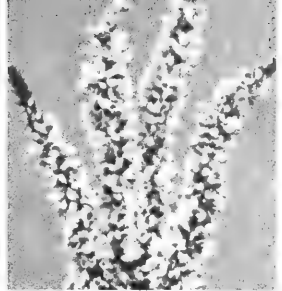
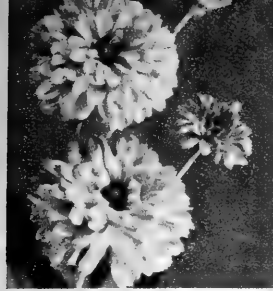
PAINTED DAISY

18P16—(*Pyrethrum*)—Robinson's Giants. Large flowering European strain of brightest red and pink colors. Hardy, fast growing, free blooming plants with attractive foliage. You can divide clumps. **35c each; 3 for 90c; 6 for \$1.65.**



BASKETS OF GOLD

18P17—(*Alyssum saxatile compactum*)—Hardy, dwarf perennials with silvery foliage that is completely covered with bright yellow blooms in early spring. Fine for rock garden and borders. **29c each; 3 for 70c; 6 for \$1.25; 10 for \$1.98.**



HELOPSIS—HARDY ZINNIA 19P1—(*Lemoines giants*) Large, hardy, double blooms of rich golden-yellow in abundance July through August on strong 2 to 3 ft. stems. Excellent for long lasting bouquets. **38c each; 3 for 95c; 6 for \$1.70.**

DIENER'S DOUBLE DAISY 19P2 — (*Shasta Daisy*) Fringed fluffy blooms like China Asters, but our seedlings vary in size and shape. Hardy, free flowering plants excellent for bouquets. **35c ea., 3 for 90c; 6 for \$1.65.**

HARDY CARNATIONS 19P3 — (*Grenadin*) Attractive silvery foliage on bushy plants with hundreds of fragrant semi-double blooms. Assorted colors of crimson, pink, violet, yellow, scarlet. **2 for 50c; 5 for 98c.**

MORDEN'S PINK 19P4—(*Lythrum*) Grows about 3 ft. tall and flowers profusely from July through Sept. Graceful long spikes of bright rose pink for exquisite bouquets. Hardy. **49c each; 3 for \$1.25.**



Large Flowering Hardy Phlox

All are new of medium height (15 to 20 inches), vigorous growing, abundant and large flowering. Dig every 3 years and divide. Cut old flowers for more bloom and to destroy seed. Enjoy their mass of magnificent mid-summer blooms at SPRING HILL'S low prices.

RUBY LEE — 19P10 — Eye-catching fuschia-red, big size, exquisite color.

EVA FORESTER—19P11—Vivid salmon apricot rose. Free flowering.

JULY GLOW—19P12—Big bright red that glistens like rubies.

PRIME MINISTER — 19P14 — Large snowy-white with vivid crimson eye.

AMERICAN BEAUTY—19P15—Gorgeous rich sparkling rose-pink. Excellent size.

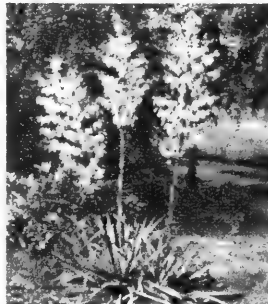
CAROLINE VANDENBURG — 19P16 — By far the best, huge, blue. (No magenta.) Price of six phlox described above Big No. 1 fieldgrown, **49c each, 3 for \$1.25; 6 for \$2.25.**

Phlox Color Collection

19PG17 — To keep varieties in balance Spring Hill makes this money saving offer. All big No. 1 giant flowering plants that will bloom this summer. **One each Red, White, Blue and Pink unlabeled. (No broken collections.)**

4 plants for \$1.25

Reliable Service for 106 Years



CANDLES OF HEAVEN 19P19—(*Yucca*) Massive heads of lovely waxy white flowers on 3 to 5 ft. stems during early and late summer. Attractive spanish-dagger-like foliage. Most hardy and colorful. **65c each, 3 for \$1.75.**



JERUSALEM CROSS 19P20—(*Lychnis Chalcedonica*) Magnificent vivid scarlet flowers continuously in July and August. One of the brightest perennials. Very hardy and of easy culture. Good for cutting. **35c each; 3 for 90c.**

BALLOON FLOWER

PLATYCODON — Big balloon-like buds in profusion throughout summer open to charming wax-like stars. Hardy plants.

SHELL PINK — 19P6 — Unusual, beautiful and showy. **40c each; 3 for 98c.**

DOUBLE WHITE—19P7—Exceptionally lovely and beautiful. **55c each, 3 for \$1.50.**

DOUBLE BLUE—19P8—Magnificent blooms of huge size. **45c each, 3 for \$1.15.**

SINGLE BLUE—19P9—Most abundant flowering. **35c each, 3 for 90c.**

Platycodon Special

19PG5 — Blooming size plants. One each unlabeled. 1 Shell Pink, 1 Double White, 1 Double Blue, 1 Dwarf Blue. Catalog value \$1.75.

4 for \$1.35



Decorative Hardy OUTDOOR FERNS

Best for shady locations. Divide when they grow thick.

OSTRICH FERN — 19P21 — Tall, plummy, graceful and useful for decorations.

ROYAL FERN — 19P22 — More dwarf, dark, glossy foliage.

Choice of above 2 hardy ferns, big clumps. **38c each; 3 for 95c; 6 for \$1.75.**

SPECIAL—19PG23 5 for \$1.45
3 Ostrich; 2 Royal.

BABY'S BREATH (*Gypsophila*)

WHITE BABY'S BREATH — 19P24 — (*Paniculata*) — Tall plants covered with single, misty-white blooms. Excellent for cutting. **2 yr., 27c each; 3 for 65c.**

NEW PINK BABY'S BREATH—19P25 — (*Oldhamiana*)—Hardy and free blooming. Tiny blossoms of flesh pink are borne in profusion and carried close in airy terminal panicles. Blooms from August til frost. Best misty mixer for bouquets. Strong, 2 yr. plants, **35c each; 3 for 90c.**

BRISTOL FAIRY — 19P26 — (*Grafted, double baby's breath*)—A wonderful introduction. Produces misty-spires of large pure white flowers. Flowers throughout summer. Strong, grafted plants, **69c ea.; 3 for \$1.90.**

Baby's Breath Garden 19PG27

1 White Baby's Breath . . \$.27
1 Bristol Fairy, double white .69
1 New Pink Baby's Breath .35

All **3**
unlabeled
98c

Certified catalog value. \$1.31





BIG OHIO FIELD GROWN EVERBLOOMING HYBRID TEA ROSES

Plant Spring Hill's big, hardy, Ohio grown roses this fall. You get bigger, earlier and more abundance of blooms next spring, summer and fall. All hybrid tea roses listed are continuous flowering from May to winter. Choice of dependable, hardy varieties for those who want a big supply of blooms for cutting and garden. Our Ohio grown roses are as fine as can be grown, they grow and bloom better.

(A) PINK DAWN

20R1—Huge, vivid rose-pink, always dependable.

(B) CHRISTOPHER STONE

20R2—Brilliant, big, fragrant, crimson-scarlet.

(C) ECLIPSE (Patent 172)

20R3—Magnificent buds, huge golden flowers.

(D) PRES. HOOVER

20R4—Extra large, blend of red, gold and pink.

(E) BETTY UPRICHARD

20R5—Magnificent vivid pink, superb in every way.

(F) JOSEPH PERRAUD

20R6—Large, golden-buff with salmon shadings.

(G) CRIMSON GLORY (Patent 105)

20R7—Most popular of all red roses. Gorgeous.

(H) K. A. VICTORIA

20R8—Big double white, outstanding in every way.

Choice of above 8 roses. 2 yr. No. 1 1/2 AAN grade, Ohio grown. Guaranteed continuous blooming.

\$1.10 each; 2 for \$1.95; 4 for \$3.75

20RG9—Special Rose Garden of 8 as pictured. One Each A, B, C, D, E, F, G, H.

All 8 for **\$7.20**

Choice of above 8 roses, 2 yr. No. 1 AAN grade, Ohio grown. Guaranteed continuous blooming.

\$1.25 each; 2 for \$2.29; 4 for \$4.30

20RG10—Rose Garden of 8 as pictured, one each A, B, C, D, E, F, G, H.

All 8 for **\$8.40**

EVERBLOOMING HYBRID TEA

Rose Color Special

20RG16—Spring Hill makes this special low price offer for those who care little for names but want abundance of continuous double blooms. **GUARANTEED SATISFACTION** one each scarlet, pink, yellow, bicolor, white and crimson. Spring Hill's selection of varieties from our hardy **OHIO GROWN BUSHES**. Only the best, double H. T. everblooming kinds. One each of six different colors named above, shipped unlabeled in bundles of six. No broken collections.

Thrifty 2 year field grown seconds

6 for \$4.49

Many varieties growing at the nursery not listed in this catalog

FINEST HARDY EVERBLOOMING CLIMBING ROSES

Four excellent hardy, rapid growing climbing roses that bloom throughout the season. Plant now for gorgeous blooms next summer.

CLIMBING BLAZE—20R11—(Patent No. 10) Magnificent profusion of vivid scarlet blooms as pictured opposite.

CLIMBING NEW DAWN—20R12—(Patent No. 1) Rated finest hardy everblooming climber. Lovely apple-blossom pink.

CLIMBING GOLD RUSH—20R14—Vigorous growing, free flowering, hardy, healthy, new, golden-yellow. Recommended.

CLIMBING WHITE DAWN—20R15—New everblooming, double white. Very outstanding.

Choice of above 4 hardy, climbing Ohio grown roses. 2 yr. No. 1, **\$1.10 each; 3 for \$2.75. Jumbo, XX size, \$1.35 each; 3 for \$3.60.**



Patented Everblooming HYBRID TEA ROSES

Finest All American Award (AAR's) Prize Winners. The eight patented roses listed below are all large fully double hybrid teas that will bloom profusely and continuously for you from May to November.

CHARLOTTE ARMSTRONG (Patent 455)

21R1—(AAR's Award) Magnificent cerise-red. Considered one of the finest roses in existence. **\$2.25 each; 3 or more at \$2.00 each.**

HORACE MCFARLAND (Patent 730)

21R2—(AAR's Award) Lovely apricot buds with salmon, gold, and buff fragrant blooms. **\$2.00 each! 3 or more at \$1.75 each.**

FORTY NINER (Patent 792)

21R3—(AAR's Award) Most brilliant of all bi-colors. Rich chrome yellow and vivid red. **\$2.50 each; 3 or more \$2.20 each.**

LOWELL THOMAS (Patent 595)

21R5—(AAR's Award) Extra large beautifully shaped vibrant yellow buds open into huge, double blooms. **\$2.00 each; 3 or more for \$1.75 each.**

HELEN TRAUBEL (Patent 1028)

21R4—(AAR's Award) A top favorite. Lovely rich-pink-gold blend. Highly recommended. **\$2.50 each, 3 or more \$2.20 each.**

MIRANDY (Patent 632)

21R6—(AAR's Award) Beautiful, marvelously fragrant, long-pointed buds. Prize winning, big, dark red blooms. **\$2.25 each; 3 or more for \$2.00 each.**

PEACE (Patent 591)

21R7—(AAR's Award) World renowned for its massive size, exquisite gold and pink color, profusion and sturdiness. **\$2.50 each; 3 or more for \$2.20 each.**

REX ANDERSON (Patent 325)

21R8—Huge, show class, well shaped snow-white blooms with ivory overcast. Vigorous growth. **\$1.75 each; 3 or more at \$1.55 each.**



Patented Everblooming Hybrid Tea Rose Special 21RG9

1 Charlotte Armstrong . . . \$2.25	1 Lowell Thomas \$2.00
1 Horace McFarland 2.00	1 Mirandy 2.25
1 Forty Niner 2.50	1 Peace 2.50
1 Helen Traubel 2.50	1 Rex Anderson 1.75
Regular catalog value \$17.75	

ALL 8 FOR \$15.65

FINEST FLORIBUNDA ROSES Always in bloom Summer through Fall

FASHION (Patent 789)

21R10—The greatest floribunda ever created. Luminous coral-pink suffused with gold, an indescribable color. Amazingly beautiful, vigorous, hardy, healthy plants filled with hundreds of blooms. **\$2.00 each; 3 or more at \$1.75.**

GOLDLOCKS (Patent 672)

21R11—The 1st and best true golden-yellow floribunda. The neat, shapely buds resemble miniature hybrid teas in form. Free blooming, healthy. **\$1.50 each; 3 or more at \$1.30 each.**

PINOCCHIO (Patent 484)

21R12—Vigorous, hardy plants produce an abundance of pointed, salmon-gold buds that open to miniature, hybrid tea-like roses of soft, clear pink in great clusters. 2 yr. No. 1, **\$1.50 each; 3 or more at \$1.30 each.**

RED PINOCCHIO (Patent 812)

21R14—Great flower clusters of rich velvety crimson. Exceptionally beautiful, long lasting, double hybrid tea-like blooms. Very popular and free flowering. **\$1.50 each; 3 or more at \$1.30 each.**

Pinocchio Rose Garden

21RG15

1 Fashion \$2.00
1 Goldilocks 1.50
1 Pinocchio 1.50
1 Red Pinocchio 1.50
Regular catalog value \$6.50

ALL 4 FOR \$5.65

Why are Floribunda's so popular? Because they are easy to grow, more hardy, vigorous and disease resistant. Plants are filled with continuous blooms in lavish profusion spring, summer, and fall for bouquets and a more colorful garden.



Choice of 7 Floribunda roses, 2 yr. Ohio field grown standard No. 1 1/2 grade. **\$1.10 each; 3 for \$2.85; 10 for \$8.95.** 2 yr. No. 1 grade, **\$1.25 each; 3 for \$3.45; 10 for \$11.00.**



DAGMAR SPAETH—21R16—Exquisite pure snow white blooms continuously and freely.

EUTIN—21R17—Gigantic flower heads of glowing crimson red. Extra beautiful.

FLORADORA (AAR's Award)—21R18—Spectacular, large orange-red double camellia-like flowers. Vigorous.

FRENSHAM—21R19—Outstanding new imported fire-engine red. A prize winner.

IMPROVED LAFAYETTE—21R20—Extra large double glowing crimson. A great favorite.

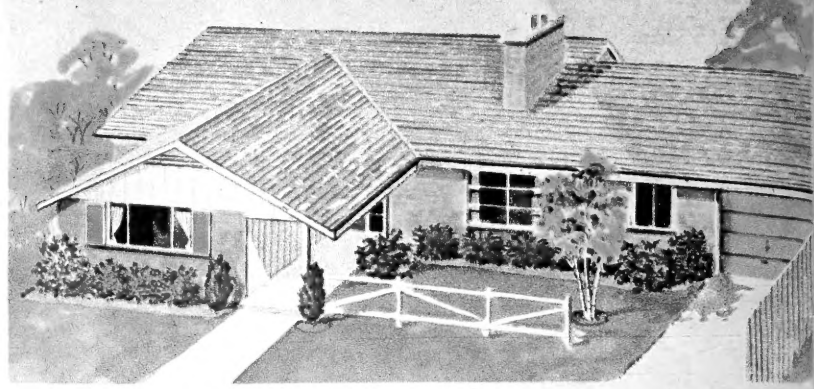
RED RIPPLES—21R21—Magnificent wavy-petaled flowers of intense red in masses.

ROSESELF—21R22—Exquisite LaFrance pink. Excellent for floral designs.

Floribunda Special

21RG23—Your choice of RED or PINK sold in units of 4 of a color. These fine 2 yr. field grown No. 2 plants will bloom for you next summer. (Select by color only)

4 of a color \$2.79



POPULAR U-PLANT-IT LANDSCAPE SPECIAL

22EG1—12 large stock evergreens as pictured at amazingly low prices. Guaranteed heavy, sheared plants, twice transplanted for stronger roots. Dug bareroot and wrapped in high grade peat moss for shipping. Dug Balled and Burlapped when you drive to the nursery. F.O.B. Tipp City. Save up to 200% on this U-Plant-It special. **\$49.50.**

- B—2 Dwarf Golden Biota, 2 ft. \$ 9.50
- B—2 Pyramid Arbor Vitae, 3 ft. 9.95
- C—2 Globe Arbor Vitae, 18 inch. 8.45
- D—2 Juniper Pfisteriana, 2 ft. 11.50
- E—2 Spiny Greek Juniper, 2 ft. 9.50
- F—2 American Arbor Vitae, 3 ft. 8.95

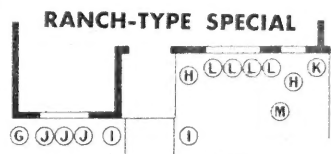
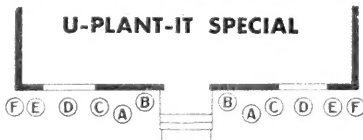
REGULAR CATALOG VALUE. \$57.85

22EG2—All 12 evergreens pictured above in smaller landscape sizes, average about 1/4 less in size. **\$34.50.**

YOUR CHOICE OF TWO

\$ 49 50

EVERGREEN SPECIALS



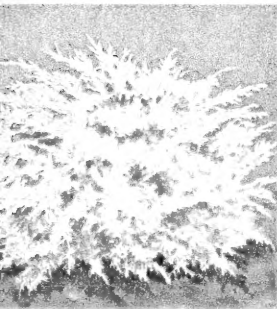
MODERN RANCH-TYPE LANDSCAPE SPECIAL

22EG3—All 14 plants in this modern low growing landscape special are big heavy well branched field grown and transplanted for heavy roots. Dug bareroot and wrapped in peat moss for shipping. Dug balled and burlapped when you drive to nursery. F.O.B. Tipp City. Recommended for ranch type homes. **\$49.50.**

- G—1 Viburnum Rhytidophyllum, 2 to 3 ft. \$ 3.85
- H—2 Evergreen Mahonia, 2 ft. 7.98
- I—2 Taxus Hicksi, 2 ft. 11.50
- J—3 Wintergreen Shrub, 12 to 15" 5.25
- K—1 Pyracantha Runyonii, 3 yr. potted.. 3.50
- L—4 Taxus Media, 15 to 18" 22.00
- M—1 Clump Birch, 4 to 5 ft. 3.75

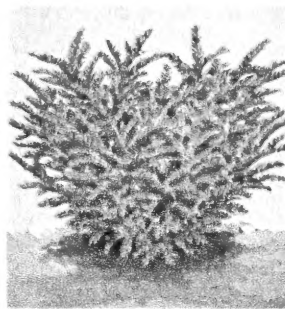
REGULAR CATALOG VALUE. \$57.83

22EG4—All 14 plants pictured above in smaller landscape sizes, average about 1/4 less in size. **\$34.50.**



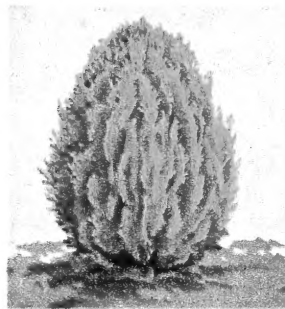
Blue Juniper PFITSERIANA

22E5—(*Hetzi Glauca*) Beautiful silvery-blue foliage. Fast growing, dependable, recommended. Pot size, 6 to 8 in. tall, **60c ea.**; **3 for \$1.55.** Heavy like picture, 12 to 15 inch spread, **\$1.75 ea.**; **2 for \$3.25.** Big 2 ft. spread size, **\$5.75 ea.**; **2 for \$10.95.**



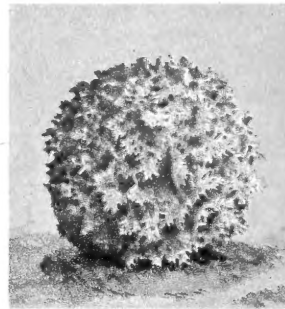
Spreading Yew TAXUS

22E6—(*Cuspidata*) Lustrous green foliage, spreading habit and ability to thrive in shade. Pot plants, 8 to 10 inches tall, **55c ea.**; **3 for \$1.45.** Heavy like picture, 12 to 15 inch spread, **\$1.85 each.**; **2 for \$3.35.** Big 12 ft. size, **\$7.00 ea.**; **2 for \$13.50.**



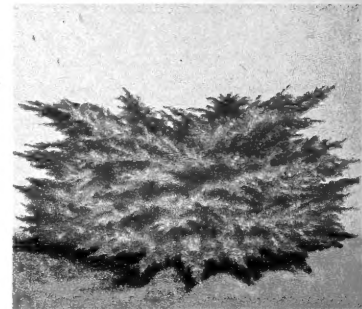
GOLDEN BIOTA A. N.

22E7—(*Dwarf Golden Oriental Arbor Vitae*) Compact, dwarf golden plants, perfect shape. Pot plants, 6 to 8 inches tall, **50c ea.**; **3 for \$1.35.** Heavy like picture, 12 to 15 inches tall, **\$1.55 ea.**; **2 for \$2.79.** Big, 2 ft. tall, **\$5.00 ea.**; **2 for \$9.50.**



GLOBE WOODWARDI

22E8—Grows naturally into dense globe-shaped plants. Best compact, dwarf variety. Pot plants, 6 to 10 inches tall, **50c ea.**; **3 for \$1.35.** Heavy like picture, 12 to 15 inches tall, **\$1.65 ea.**; **2 for \$2.95.** Big 18 inch size, **\$4.50 each.**; **2 for \$8.45.**

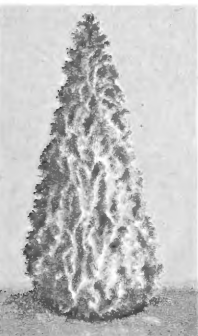


JUNIPER PFITSERIANA

22E9—Best and most dependable spreading landscape evergreen for all climates and locations. Pot plants, 6 to 8 inches tall, **55c ea.**; **3 for \$1.45.** Heavy like picture, 12 to 15 inch spread, **\$1.65 ea.**; **2 for \$2.95.** Big 2 ft. spread size, **\$6.00 ea.**; **2 for \$11.50.**

PLANT YOUR HOME...SAVE MONEY...

Free Landscape Advice. We grow our own Evergreens... Check our Prices and you will often save over 200%. Hundreds of sizes and varieties not listed. Our low cost baby-size grow in value.



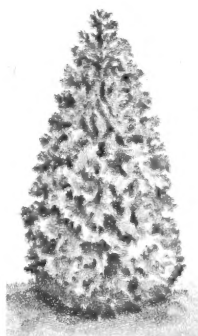
Pyramid ARBOR VITAE

22E10—Grows naturally and fast into tall, dense, slender columns. Popular, dependable. Pot plants, 8 to 10 inches tall, **55c ea.**; **3 for \$1.45.** Heavy like picture, 15 to 18 inches tall, **\$1.65 ea.**; **2 for \$2.95.** Big 3 ft. size, **\$5.25 ea.**; **2 for \$9.95.**



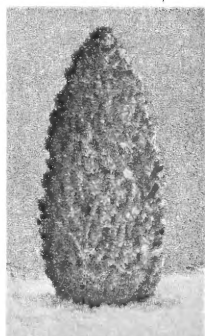
Colorado BLUE SPRUCE

22E11—Impressive color and perfect shape adds beauty and value to any property. Rated the most beautiful of all evergreens. 4 to 6 inch planting size, **4 for \$1.00.** 5 to 7 inch, **3 for 99c.** Heavy 12 inch, bushy, **\$2.95 each.**; **2 for \$5.50.**



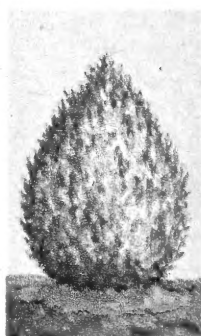
American ARBOR VITAE

22E12—Tall, broad, upright, fast growing. Useful for hedges, screens and foundation plantings. 4 year, 8 to 10 inch size, **35c ea.**; **3 for 90c.** Heavy like picture, 15 to 18 inches tall, **\$1.50 ea.**; **2 for \$2.69.** Big, 3 ft. tall size, **\$4.75 ea.**; **2 for \$8.95.**



Upright Yew TAXUS HICKSI

22E14—Beautiful upright, semi-dwarf, landscape evergreen for sunny and shady locations. Pot size, 8 to 10 in. tall, **55c ea.**; **3 for \$1.45.** Heavy like picture 12 to 15 in. tall, **\$1.85 ea.**; **2 for \$3.35.** Big, 2 ft. tall size, **\$6.00 ea.**; **2 for \$11.50.**



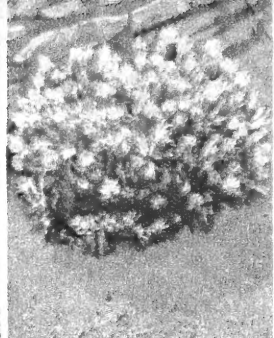
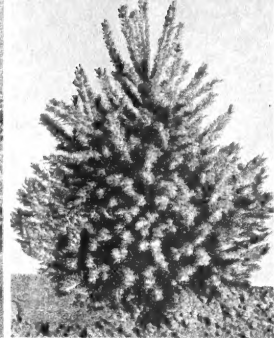
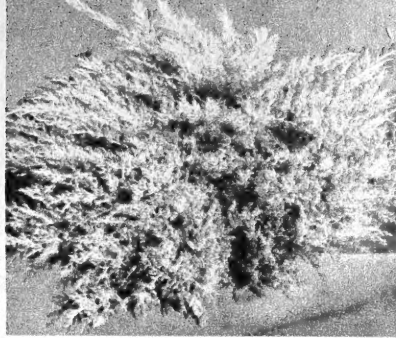
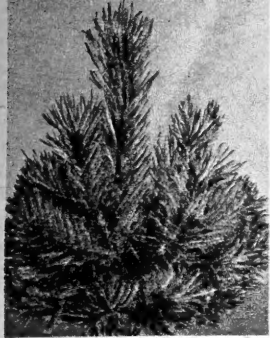
Spiny GREEK JUNIPER

22E15—Attractive bluish-green foliage, dense, dwarf plants require no trimming. Pot plants, 6 to 8 in. tall, **55c ea.**; **3 for \$1.45.** Heavy (like picture) 12 to 15 in. tall, **\$1.60 ea.**; **2 for \$2.89.** Landscape size, 2 ft. tall, **\$5.00 ea.**; **2 for \$9.50.**



EVERGREEN FIRETHORN

22E16—(*Pyracantha Runyonii*) New improved hardy variety filled with brilliant scarlet-red berries through fall and winter. Handsome leaves stay green winter and summer. We think this is the finest hardy variety. Very popular with landscape gardeners. Pot plants, 6 to 9 inches, **69c each.**; **3 for \$1.95.** 3 yr., 3 inch pot plants, 12 to 15 inches tall, **\$2.15 each.**; **2 for \$3.95.**



Scotch Pine

23E1—Long, dark green needles. Tall, fast growing. Recommended for hedges, wind breaks and cluster planting. 4 yr., 8 to 10 inch, 50c each; 3 for \$1.35. 15 to 18 inch, \$1.65 each; 2 for \$2.95. 3 ft. size, \$5.00 ea.

Blue Spreading Juniper

23E2—(Patent No. 422)—A new, more intense blue or vivid silvery-blue, low, spreading variety like the famous pfitzer in habit but more colorful, more dwarf. Highly recommended. Pot plants, 6 to 8 inch, 69c each, 3 for \$1.90. 3 yr., 12 to 18 inch spread, \$1.79 each, 2 for \$3.30. 5 yr., 2 to 2½ ft. spread, \$6.00 each.

Norway Spruce

23E3—Highly recommended for outdoor living Christmas trees, wind breaks, avenue and specimen plantings. Fast growing. 8 to 10 inch, 50c each; 3 for \$1.35. 12 to 18 inch, \$1.85 each; 2 for \$3.40. 2 ft. size, \$3.50 ea.

Irish Juniper

23E4—Tall, narrow, formal growth with neat silvery foliage and sleek appearance. Useful for foundation and formal plantings. Does not grow very tall. Pot plants, 6 to 9 inch, 50c each; 3 for \$1.35. 12 to 18 inch, \$1.45 each; 2 for \$2.60. 3 ft. size, \$4.00 each.

Mugho Pine

23E5—Grows naturally in compact low round shape. Useful for foundation and formal plantings. 4 yr., 5 to 7 inch, 60c each, 3 for \$1.65; 10 to 12 inch spread, \$1.95 each, 2 for \$3.60; 18 to 24 inch, \$4.50 each.

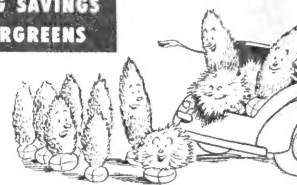
LOW PRICES FOR SMALL PLANTING EVERGREENS

It's economical, it's easy, it's interesting to plant and grow your evergreens. Excellent varieties for hedges, windbreaks, Christmas trees, wood lots and landscaping. Write for special wholesale prices on large orders.

	Catalog Number	Size	Price for 5	Price for 10	Price for 25	Price for 100
American Arbor Vitae	23E6	8-10 in.	1.35	2.25	4.95	17.50
Globe Arbor Vitae	23E7	5-7 in.	2.25	3.95	9.35	35.00
Pyramid Arbor Vitae	23E8	8-10 in.	2.35	4.40	10.60	39.95
Golden Biota A. N.	23E9	4-6 in.	2.25	3.95	9.35	35.00
Juniper Pfitseriana	23E10	6-8 in.	2.35	4.40	10.60	39.95
Blue Pfitseriana	23E11	6-8 in.	2.50	4.75	11.25	42.50
Juniper Hetzi Glauca	23E29	6-8 in.	2.25	3.95	9.35	35.00
Spruce, Black Hill	23E12	3-6 in.	.90	1.45	3.35	12.50
Spruce, Colorado Blue	23E14	3-6 in.	.85	1.40	3.20	12.00
Spruce, Norway	23E15	3-6 in.	.85	1.40	3.20	12.00
Pine, Austrian	23E16	5-7 in.	1.00	1.75	3.95	15.00
Pine, Scotch	23E17	5-7 in.	.90	1.45	3.35	12.50
Pine, Dwarf Mugho	23E18	4-6 in.	1.00	1.75	3.95	15.00
Taxus Cuspidata	23E19	8-10 in.	2.35	4.40	10.60	39.95
Taxus Hicksi	23E20	8-10 in.	2.35	4.40	10.60	39.95

Drive to the Nursery for BIG SAVINGS ON HOME GROWN EVERGREENS

Balled and burlapped Ready to go . . . We grow the evergreens we sell. Many sizes and varieties not listed in catalog.



EVERGREEN DIGGING NOTICE — All evergreens for shipping will be fresh dug from our field bare root and wrapped in moist peat. Present day delivery and packing costs make it too expensive to ship balled and burlapped. Our experience shows that bare root evergreens deliver better and grow just as well. Balled and burlapped evergreens available at nursery.

Attractive EVERGREEN SHRUBS

They stay green all winter and add distinction to your home.

The following hardy evergreen shrubs are especially delightful, beautiful winter and summer.

Oriental Holly

23E21—(*Ilex Crenata Rotundifolia*)—Beautiful, compact, handsome foliaged hardy plants. Grow in sun or shade. An elite landscape shrub. 3 yr., 8 to 10 inch branched plants, \$1.10 each; 2 for \$1.98; 6 for \$5.70.

Rhododendron

23E22—(*Catawbiense Grandiflorum*)—This fine evergreen shrub does not require shade—it is easy to grow in acid soil. In limestone areas or where soil is alkaline do not plant unless soil is made acid with aluminum sulphate and peat. Gorgeous rosy-lilac-purple to lavender-pink flowers produced in masses are magnificent. The broad, leathery, evergreen foliage has a majestic dignity in winter. Plants usually bloom 1st or 2nd year. Big 3 yr. transplants, 12 to 18 inch, \$1.79 each; 3 for \$4.95.

Evergreen Firethorn (See opposite page for color picture and complete description)

Wintergreen Shrub

23E23—(*Euonymus Fortunei Erecta*) New, small leaf variety grows compact. Superb evergreen shrub for all modern homes. Bright green glossy foliage is persistent so the plants are green the entire winter. Special new low prices. 3 year 12 to 18 inch, \$1.75 each; 3 for \$4.50. 2 yr. 9 to 12 inch, \$1.15 each; 3 for \$2.95.

Viburnum Burkwoodi

23E24—Shiny dark green foliage, lovely sweet scented waxy blush-white blooms in spring. Fast growing, hardy plants grow 8 to 10 ft. tall. Excellent for hedges and mixed border plantings. Clip to desired height. Pot size, 75c each, 3 for \$1.95. 2 to 3 ft. size, \$2.95 each; 3 for \$8.65.

Evergreen Dwarf Holly

23E25—(*Ilex Crenata Hetzi*) Very bushy, low growing plants with glossy, small dark green boxwood-like foliage all year. Grow in sun or shade, acid or alkaline soil. Winter hardy to Chicago. Highly recommended. 3 yr., 8 to 12 inch, well branched, \$1.15 each; 3 for \$3.20; 6 for \$5.95.

Wintergreen Bittersweet

23E26—(*Euonymus Newport*) Select, upright variety that grows 2 to 3 ft. tall. Handsome, dwarf, bushy, hardy evergreen shrubs. 6 to 8 inch pot plants, 50c each; 3 for \$1.29; 10 for \$3.95. 15 to 18 inch, bushy, \$1.35 each; 3 for \$3.75.

Viburnum Rhytidophyllum

23E27—Striking and beautiful plants with lustrous large narrow leaves deeply wrinkled. Beautiful white blooms in spring, large clusters of brilliant red fruits change to shiny black. A rare, tall growing (8 to 10 ft.) of aristocratic appearance. 6 to 9 inch pot plants, 89c each; 3 for \$2.50. Stocky 2 to 3 ft. size, \$3.85 each; 2 for \$7.40.

Holly Leaf Mahonia

23E28—(*Aquifolia*)—Glistening hollyleaf foliage all winter. Wonderful Xmas decorations. Hardy low bushy shrubs for landscaping; grows especially well in semi shade. Pot plants, 6 to 8 inches, 59c each, 3 for \$1.50; 12 to 18 inch size, \$1.89 each, 2 for \$3.60, 5 for \$8.75. 2 ft. size, \$4.25 each, 2 for \$7.98.

23

RHODODENDRON

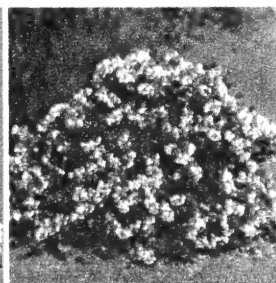
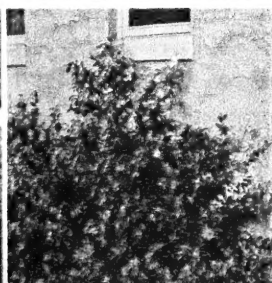
WINTERGREEN SHRUB

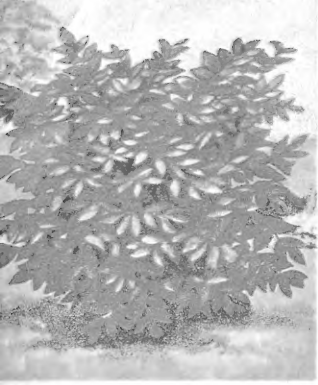
BURKWOODI

DWARF HOLLY

RHYTIDOPHYLLUM

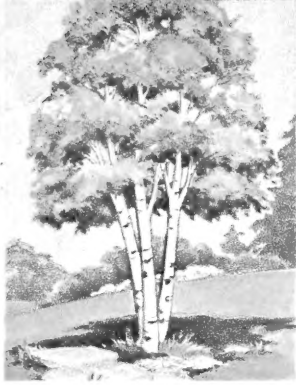
MAHONIA





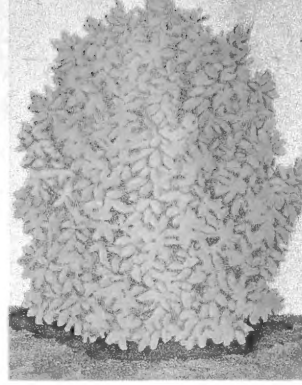
BURNING BUSH

24K1—(*Euonymus Alatus Compacta*) Bushy, low growing (6 to 8 ft.) hardy shrubs change from jade green to eye catching brilliant rosy crimson each fall. 4 yr., 1 to 1½ ft., **\$1.29 each**, 2 for **\$2.40**, 6 for **\$6.98**; 5 yr., 18 to 24 inch, **\$2.60 each**, 2 for **\$4.95**.



CLUMP BIRCH

24K2— Distinguished appearing trees with attractive white bark and handsome golden autumn foliage. 3 or more stems per clump as pictured. 3 to 4 ft. tall, **\$2.65 each**, 3 for **\$7.50**; 4 to 5 ft. size, **\$3.75 each**, 3 for **\$10.80**. Single stem birch trees, see 1c sale, page 16.



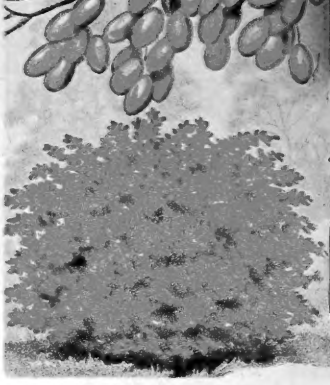
CHARTREUSE SHRUB

24K3— (*Ligustrum Vicari*) A comparatively new, hardy, golden privet with vivid-golden foliage in spring that changes to chartreuse in summer and autumn. Trim any time to desired height. 2 year, 12 to 18 inch, **69c ea.**; 2 for **\$1.20**. 3 yr., 2 ft., **\$1.35 ea.**; 2 for **\$2.49**.



MOCK ORANGE

24K4— (*Philadelphus Virginialis*)— Everblooming with big double, thick, waxy-white blooms. Continuously throughout the season. Hardy semi-dwarf shrubs. New low prices. 12 or 18 inch, **48c each**; 3 for **\$1.25**. 2 to 3 ft. size, **90c each**; 3 for **\$2.45**.



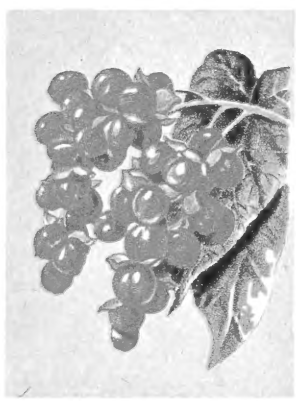
Red Leaf BARBERRY

24K5—(*Thunbergi Atropurpurea*) Intensely brilliant red foliage spring and summer deepening to dark crimson in the fall. Plant in full sunlight for bright coloring. Superb red strain. 15-18 inch size, **60c each**, 3 or more **49c each**. 18 to 24 inch size. **75c ea.**, 3 or more **65c ea.**



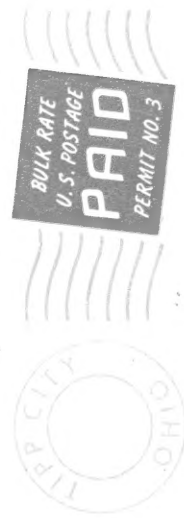
RUSSELL LUPINES

24P6—(*Reselected hybrids*) The sensation of European horticulture a few years ago. Gorgeous self colors and bicolors of majestic beauty on stately spikes 3 to 5 foot tall. Finest of all Lupines. Big plants, **40c each**, 3 for **\$1.00**, 6 for **\$1.89**.

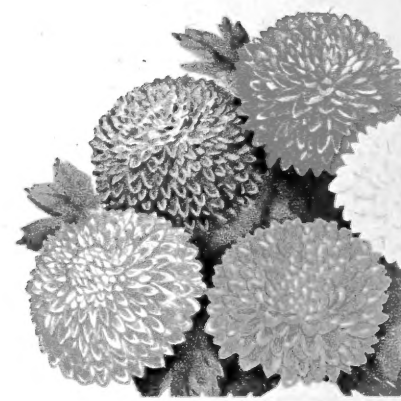


American BITTERSWEET

24V7— (*Celastrus Scandens*) Most decorative variety for winter bouquet. Hardy, fast growing vines will cover fences, walls and arbors. Beautiful, scarlet fruits for fall and winter decorations. 2 yr. **55c each**; 3 for **\$1.50**. 3 yr. fruiting age, **90c each**; 3 for **\$2.48**.

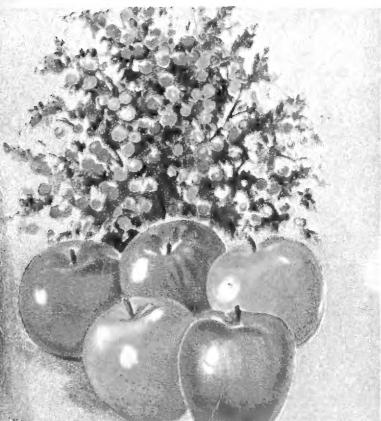


Library, of
U. S. Dept. of Agriculture
Washington 25, D. C.



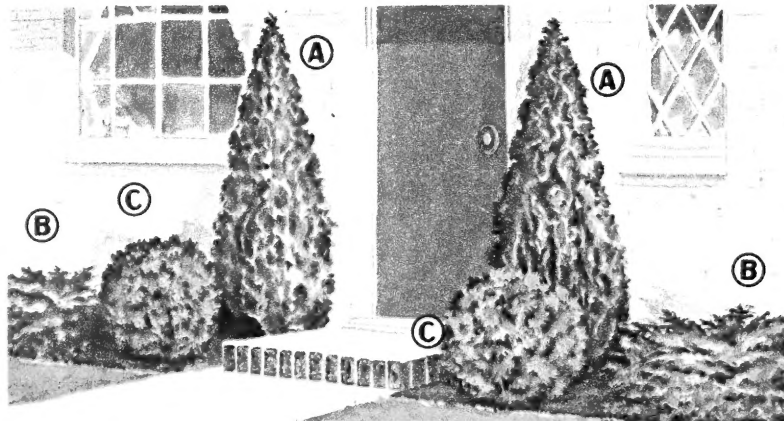
HARDY BUTTON MUMS

24C8— Compact, double, button-like flowers in great profusion, unsurpassed. Finest hardy varieties for cutting and garden beauty. Choice of Red, Bronze, Pink, Yellow, White. Big field clumps with tops broken off for shipping. **50c each**; 3 for **\$1.25**; 10 for **\$3.95**.



5-N-1 APPLE TREE

24F9— (*Fruit all season*)— 5 kinds of apples grafted on each tree. One tree will yield ripe apples from July to November. Guaranteed assortment of the finest varieties. Interesting, beautiful lawn trees. Big, 4 to 5 ft. size, **\$2.95 ea.**; 3 for **\$8.65**.

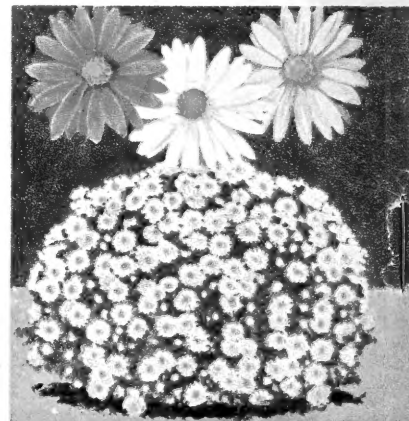


PORCH ENTRANCE EVERGREEN GROUP

24E10— Stocky, heavily developed junior landscape size. Shipped individually wrapped in high grade peat, to fertilize soil when planting. Regular **\$14.50 value**.

6 as pictured \$9.98

- (A) Pyramid Arbor Vitae, 18 to 24 in. tall, matched 2 for **\$5.00**
- (B) Juniper Pfisteriana, 12-18 in. spread, 6 yr., matched 2 for **\$5.00**
- (C) Globe Arbor Vitae, 12 to 15 in. round, matched 2 for **\$4.50**



DWARF CUSHION ASTERS

24P11 Hundreds of blooms so dense they completely hide the foliage on low 12 inch plants August through Sept. Hardy plants last for years and multiply. Choice of Red Boy; Snowsprite; Blue Boy or Pink Lady. **45c each**. Garden of Four, one each, 4 for **\$1.29**.